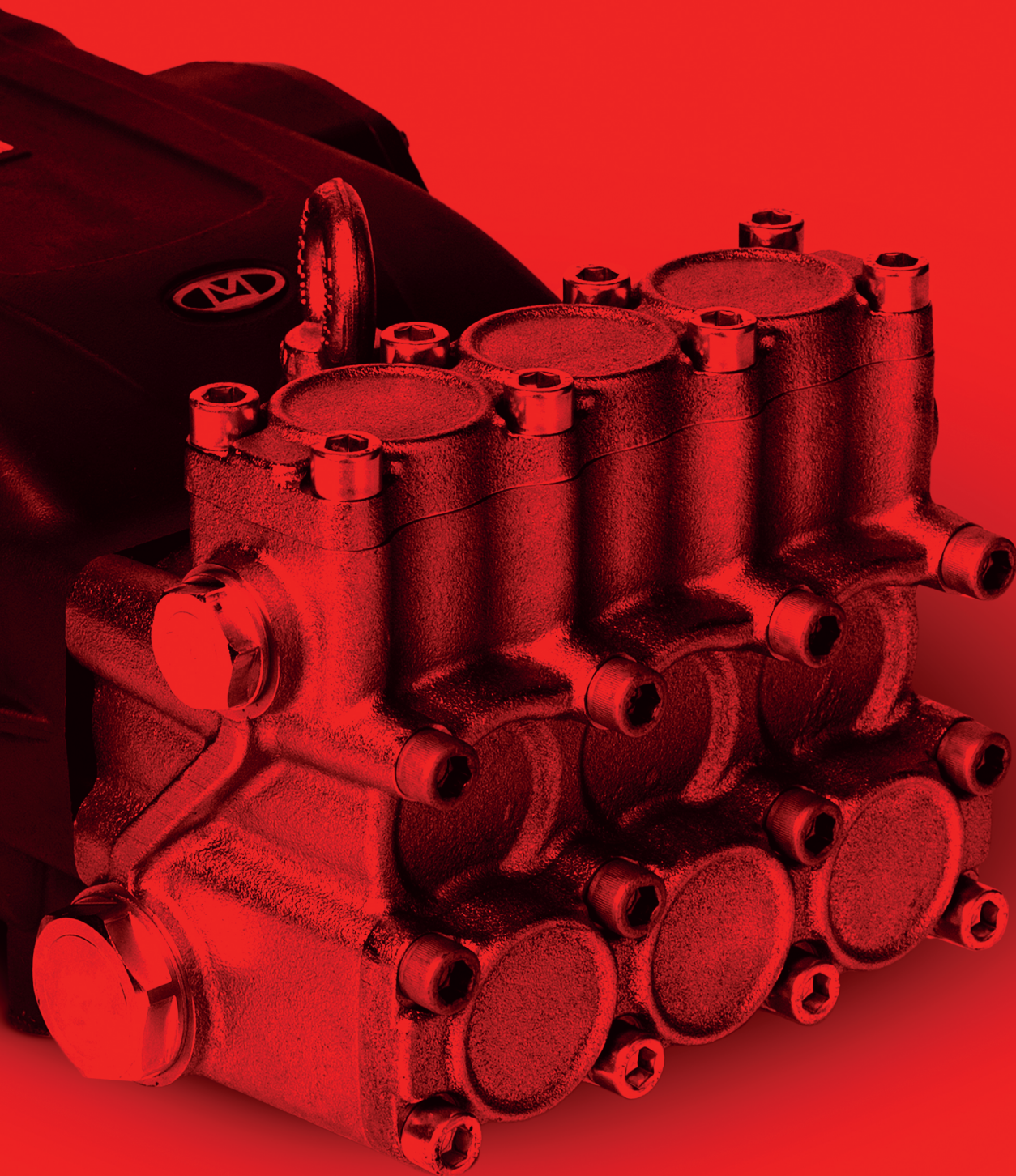




www.e-mazzoni.it



2024 PRICE LIST
INDUSTRIAL

POMPE ALTA PRESSIONE - MOTORI - CALDAIE - VALVOLE

SUMMARY

GAS HEATERS	3
DIESEL HEATERS	4
DIESEL HEATERS WITH ELECTRIC BOX.....	7
ELECTRIC HEATERS	11
HOT BOX TROLEY	12
SPARE PARTS FOR BOILERS.....	13
ELECTRONIC CARDS	24
ELETRIC MOTORS IE2/IE3 4 POLES	27
ELECTRIC PUMP	33
HYDRAULIC MOTORPUMP	37
MAZZONI PUMPS.....	39
SPARE PARTS FOR PUMPS.....	64
VALVES	71
HOSE REELS AND HIGH PRESSURE HOSES	74
GUNS - LANCES - NOZZLES	77
CONNECTIONS - FILTERS - PRESSURE GAUGES	82

LPG



Packaging at cost

COIL IN STAINLESS STEEL AISI304 – MAX. 250 BAR EXTRA 1.727 EURO TO THE PRICE LIST

15 L - SMALL / 21 L - MEDIUM / 30 L - BIG

- **MIN PRESSURE INPUT (BAR):** 20
- **INLET:** M 22x1,5
- **OUTLET:** M 22x1,5
- **NET WEIGHT (KG):** 47
- **MAX. TEMPERATURE OUTLET (°C):** 150°C

PART NUMBER	L/MIN	BAR	VOLTS	HZ	PERFORMANCE (KW)	COIL LENGHT (MT)	COIL THIKNESS (MM)	A 50 HZ	KCAL/H	GAS CONSUMPTION (NM3/H)	€
3.026.04.043	15	250	230	50	103	24	2,3	1,1	55,000	3,5	5.093,00
3.026.04.039	21	250	230	50	112	35	2,6	1,1	96,000	3,9	5.976,00
3.026.04.040	30	250	230	50	134	38,5	3	2,4	117,000	4,6	6.527,00

METHANE



Packaging at cost

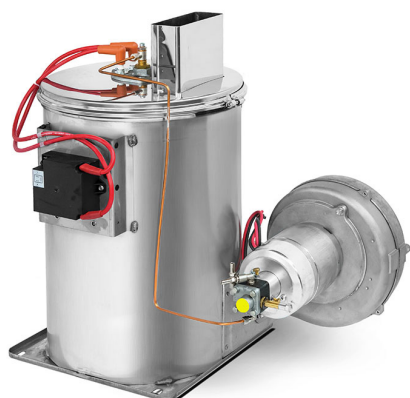
COIL IN STAINLESS STEEL AISI304 – MAX. 250 BAR EXTRA 1.727 EURO TO THE PRICE LIST

15 L - SMALL / 21 L - MEDIUM / 30 L - BIG

- **MIN PRESSURE INPUT (BAR):** 20
- **INLET:** M 22x1,5
- **OUTLET:** M 22x1,5
- **NET WEIGHT (KG):** 47
- **MAX. TEMPERATURE OUTLET (°C):** 150°C

PART NUMBER	L/MIN	BAR	VOLTS	HZ	PERFORMANCE (KW)	COIL LENGHT (MT)	COIL THIKNESS (MM)	A 50 HZ	KCAL/H	GAS CONSUMPTION (NM3/H)	€
3.026.04.044	15	250	230	50	102	24	2,3	1,1	50,000	10,5	5.093,00
3.026.04.045	21	250	230	50	107	35	2,6	1,1	92,000	11	5.976,00
3.026.04.046	30	250	230	50	124	38,5	3	2,4	115,000	14	6.527,00

SMALL HEATERS



Packaging at cost

**COIL IN STAINLESS STEEL AISI304 –
MAX. 250 BAR EXTRA 1.727 EURO TO
THE PRICE LIST**

- **KCAL/H:** 50,000
- **MIN PRESSURE INPUT (BAR):** 3
- **INLET:** G 1/2"
- **OUTLET:** G 1/2"
- **NET WEIGHT (KG):** 45
- **MAX. TEMPERATURE OUTLET (°C):** 150°C

PART NUMBER	L/MIN	BAR	VOLTS	HZ	PERFORMANCE (KW)	COIL LENGHT (MT)	COIL THIKNESS (MM)	DIESEL NOZZLE	A 50 HZ	DIESEL CONSUMPTION (LT/H)	Q-TY	€
3.026.02.025	15	250	12	DC	58,15	24	2,3	1,25	36	4,73	1-3	1.674,00
											4-100	1.455,00
3.026.02.026	15	250	24	DC	58,15	24	2,3	1,25	15,5	4,70	1-3	1.674,00
											4-100	1.455,00
3.026.02.027	15	250	230	50	58,15	24	2,3	1,25	1,4	4,70	1-3	1.236,00
											4-100	1.076,00
3.026.02.028	15	250	400	50	58,15	24	2,3	1,25	1,4	4,70	1-3	1.295,00
											4-100	1.126,00

MEDIUM HEATERS



Packaging at cost

**COIL IN STAINLESS STEEL AISI304 –
MAX. 250 BAR EXTRA 1.727 EURO TO
THE PRICE LIST**

- **KCAL/H:** 80,000
- **MIN PRESSURE INPUT (BAR):** 3
- **INLET:** G 1/2"
- **OUTLET:** G 1/2"
- **NET WEIGHT (KG):** 45
- **MAX. TEMPERATURE OUTLET (°C):** 150°C

PART NUMBER	L/MIN	BAR	VOLTS	HZ	PERFORMANCE (KW)	COIL LENGHT (MT)	COIL THIKNESS (MM)	DIESEL NOZZLE	A 50 HZ	DIESEL CONSUMPTION (LT/H)	Q-TY	€
3.026.02.031	15	250	400	50	58,15	35	2,6	1,65	0,7	4,70	1-3	1.260,00
											4-100	1.177,00
3.026.02.008	21	250	400	50	93	35	2,6	2	1,4	7,55	1-3	1.403,00
											4-100	1.218,00
3.026.02.013	21	250	230	50	93	35	2,6	2	1,4	7,56	1-3	1.356,00
											4-100	1.180,00
3.026.02.038	21	250	12	DC	93	35	2,6	2	36	7,55	1-3	1.825,00
											4-100	1.586,00

MEDIUM HEATERS



Packaging at cost

**COIL IN STAINLESS STEEL AISI304 –
MAX. 250 BAR EXTRA 1.727 EURO TO
THE PRICE LIST**

- **KCAL/H:** 90,000
- **MIN PRESSURE INPUT (BAR):** 3
- **INLET:** G 1/2"
- **OUTLET:** G 1/2"
- **NET WEIGHT (KG):** 59
- **MAX. TEMPERATURE OUTLET (°C):** 150°C

PART NUMBER	L/MIN	BAR	VOLTS	HZ	PERFORMANCE (KW)	COIL LENGHT (MT)	COIL THIKNESS (MM)	DIESEL NOZZLE	A 50 HZ	DIESEL CONSUMPTION (LT/H)	Q-TY	€
3.026.02.007	25	250	400	50	105	35	2,6	2,25	1,4	8,5	1-3	1.444,00
											4-100	1.256,00
3.026.02.014	25	250	230	50	105	35	2,6	2,25	1,4	8,5	1-3	1.375,00
											4-100	1.195,00
3.026.02.019	25	250	24	DC	105	35	2,6	2,25	15,5	8,5	1-3	1.792,00
											4-100	1.558,00
3.026.02.020	25	250	12	DC	105	35	2,6	2,25	36	8,5	1-3	1.792,00
											4-100	1.558,00
3.026.02.057	25	350	230	50	105	35	2,6	2,25	1,4	8,5	1-3	1.770,00
											4-100	1.539,00
3.026.02.055	25	350	12	DC	105	35	2,6	2,25	36	8,5	1-3	2.167,00
											4-100	1.885,00
3.026.02.059	25	500	230	50	105	35	3	2,25	1,4	8,5	1-3	1.896,00
											4-100	1.650,00
3.026.02.061	25	500	400	50	105	35	3	2,25	1,4	8,5	1-3	1.868,00
											4-100	1.626,00

MEDIUM HEATERS + CENTERING RING



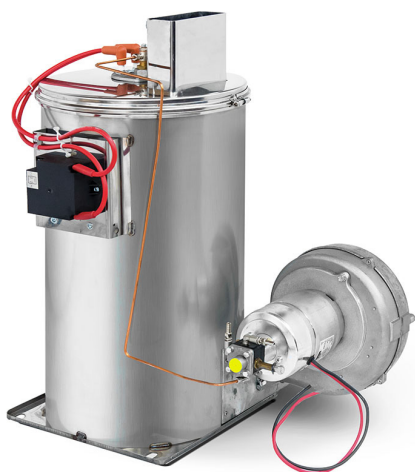
Packaging at cost

**COIL IN STAINLESS STEEL AISI304 –
MAX. 250 BAR EXTRA 1.727 EURO TO
THE PRICE LIST**

- **KCAL/H:** 80,000
- **MIN PRESSURE INPUT (BAR):** 3
- **INLET:** G 1/2"
- **OUTLET:** G 1/2"
- **NET WEIGHT (KG):** 58
- **MAX. TEMPERATURE OUTLET (°C):** 150°C

PART NUMBER	PORTATA LT_RPM1	BAR	VOLTS	HZ	PERFORMANCE (KW)	COIL LENGHT (MT)	COIL THIKNESS (MM)	DIESEL NOZZLE	A 50 HZ	DIESEL CONSUMPTION (LT/H)	Q-TY	€
3.026.02.093	21	250	12	50	93	35	2,6	2	28	7,55	1-3	1.993,00
											4-100	1.757,00

MEDIUM HEATERS + CENTERING RING



Packaging at cost

**COIL IN STAINLESS STEEL AISI304 –
MAX. 250 BAR EXTRA 1.727 EURO TO
THE PRICE LIST**

- **KCAL/H:** 90000 kcal/h
- **MIN PRESSURE INPUT (BAR):** 3
- **INLET:** G 1/2"
- **OUTLET:** G 1/2"
- **NET WEIGHT (KG):** 59
- **MAX. TEMPERATURE OUTLET (°C):** 150°C

PART NUMBER	PORTATA LT_RPM1	BAR	VOLTS	HZ	PERFORMANCE (KW)	COIL LENGHT (MT)	COIL THICKNESS (MM)	DIESEL NOZZLE	A 50 HZ	DIESEL CONSUMPTION (LT/H)	Q-TY	€
3.026.02.096	25	250	230	50	105	35	2,6	2,25	1,1	8,5	1-3	1.541,00
											4-100	1.362,00
3.026.02.167	25	250	12	50	105	35	2,6	2,25	36	8,5	1-3	1.959,00
											4-100	1.725,00
3.026.02.174	25	350	230	50	105	35	2,6	2,25	1,4	8,5	1-3	1.937,00
											4-100	1.706,00

BIG HEATERS



Packaging at cost

**COIL IN STAINLESS STEEL AISI304 –
MAX. 250 BAR EXTRA 1.727 EURO TO
THE PRICE LIST**

- **KCAL/H:** 110,000
- **MIN PRESSURE INPUT (BAR):** 3
- **INLET:** G 1/2"
- **OUTLET:** G 1/2"
- **NET WEIGHT (KG):** 81
- **MAX. TEMPERATURE OUTLET (°C):** 150°C

PART NUMBER	L/MIN	BAR	VOLTS	HZ	PERFORMANCE (KW)	COIL LENGHT (MT)	COIL THICKNESS (MM)	DIESEL NOZZLE	A 50 HZ	DIESEL CONSUMPTION (LT/H)	Q-TY	€
3.026.02.016	30	350	400	50	128	38,5	3	2,5	2	9,45	1-2	2.464,00
											3-100	2.144,00
3.026.02.017	30	350	230	50	128	38,5	3	2,5	2,7	9,45	1-2	2.415,00
											3-100	2.100,00
3.026.02.030	30	350	12	DC	128	38,5	3	2,5	61	9,45	1-2	2.804,00
											3-100	2.439,00
3.026.02.029	30	350	24	DC	128	38,5	3	2,5	28,5	9,45	1-2	2.770,00
											3-100	2.410,00
3.026.02.053	30	500	400	50	128	38,5	3	2,5	2,0	9,45	1-2	2.544,00
											3-100	2.212,00
3.026.02.047	30	500	12	DC	128	38,5	3	2,5	61	9,45	1-2	2.893,00
											3-100	2.516,00
3.026.02.051	30	500	24	DC	128	38,5	3	2,5	28,5	9,45	1-2	2.860,00
											3-100	2.487,00

BIG HEATERS + CENTERING RING



Packaging at cost

**COIL IN STAINLESS STEEL AISI304 –
MAX. 250 BAR EXTRA 1.727 EURO TO
THE PRICE LIST**

- **KCAL/H:** 110,000
- **MIN PRESSURE INPUT (BAR):** 20
- **INLET:** G 1/2"
- **OUTLET:** G 1/2"
- **NET WEIGHT (KG):** 85
- **MAX. TEMPERATURE OUTLET (°C):** 150°C

PART NUMBER	PORTATA LT_RPM1	BAR	VOLTS	HZ	PERFORMANCE (KW)	COIL LENGHT (MT)	COIL THICKNESS (MM)	DIESEL NOZZLE	A 50 HZ	DIESEL CONSUMPTION (LT/H)	Q-TY	€
3.026.02.099	30	500	230	50	128	38,5	3	2,5	2,4	9,45	1-2	2.595,00
											3-99	2.281,00
3.026.02.143	30	350	12	DC	128	38,5	3	2,5	53	9,45	1-2	2.983,00
											3-100	2.618,00
3.026.02.109	30	350	24V	DC	128	38,5	3	2,5	25	9,45	1-2	2.951,00
											3-100	2.591,00

MAXI HEATERS



Packaging at cost

**COIL IN STAINLESS STEEL AISI304 –
MAX. 250 BAR EXTRA 3509 EURO TO
THE PRICE LIST**

- **KCAL/H:** 135,000
- **MIN PRESSURE INPUT (BAR):** 3
- **INLET:** G 1/2"
- **OUTLET:** G 1/2"
- **NET WEIGHT (KG):** 105
- **MAX. TEMPERATURE OUTLET (°C):** 150°C

PART NUMBER	L/MIN	BAR	VOLTS	HZ	PERFORMANCE (KW)	COIL LENGHT (MT)	COIL THIKNESS (MM)	DIESEL NOZZLE	A 50 HZ	DIESEL CONSUMPTION (LT/H)	Q-TY	€
3.026.02.116	40	500	230	50	128	48	3	3,5	2,8	13,23	1-2	3.606,00
											3-100	3.224,00
3.026.02.117	40	500	12	DC	128	48	3	3,5	61	13,23	1-2	3.996,00
											3-100	3.596,00
3.026.02.118	40	500	24	DC	128	48	3	3,5	28,5	13,23	1-2	3.961,00
											3-100	3.562,00

SMALL HEATERS



Packaging at cost

**COIL IN STAINLESS STEEL AISI304 –
MAX. 250 BAR EXTRA 1.727 EURO TO
THE PRICE LIST**

- **KCAL/H:** 50,000
- **MIN PRESSURE INPUT (BAR):** 20
- **INLET:** M 22x1,5
- **OUTLET:** M 22x1,5
- **NET WEIGHT (KG):** 48
- **MAX. TEMPERATURE OUTLET (°C):** 150°C

PART NUMBER	L/MIN	BAR	VOLTS	HZ	PERFORMANCE (KW)	COIL LENGHT (MT)	COIL THIKNESS (MM)	DIESEL NOZZLE	A 50 HZ	DIESEL CONSUMPTION (LT/H)	Q-TY	€
3.026.02.037	15	250	12	DC	53,5	24	2,3	1,25	30	4,70	1-2	2.396,00
											3-100	2.201,00
3.026.02.066	15	250	24	DC	53,5	24	2,3	1,25	17	4,70	1-2	2.396,00
											3-100	2.201,00
3.026.02.067	15	250	230	50	53,3	24	2,3	1,25	2,4	4,70	1-2	1.967,00
											3-100	1.711,00
3.026.02.079	15	250	400	50	58,15	24	2,3	1,25	0,7	4,70	1-2	2.116,00
											3-100	1.967,00

SMALL HEATERS + CENTERING RING



Packaging at cost

**COIL IN STAINLESS STEEL AISI304 –
MAX. 250 BAR EXTRA 1.727 EURO TO
THE PRICE LIST**

- **KCAL/H:** 50,000
- **MIN PRESSURE INPUT (BAR):** 3
- **INLET:** G 1/2"
- **OUTLET:** G 1/2"
- **NET WEIGHT (KG):** 45
- **MAX. TEMPERATURE OUTLET (°C):** 150°C

PART NUMBER	PORTATA LT_RPM1	BAR	VOLTS	HZ	PERFORMANCE (KW)	COIL LENGHT (MT)	COIL THIKNESS (MM)	DIESEL NOZZLE	A 50 HZ	DIESEL CONSUMPTION (LT/H)	Q-TY	€
3.026.02.101	15	250	12	DC	58,15	24	2,3	1,25	30	4,70	1-2	2.565,00
											3-99	2.253,00
3.026.02.104	15	250	24	DC	53,5	24	2,3	1,25	12	4,70	3-100	2.368,00

MEDIUM HEATERS



Packaging at cost

**COIL IN STAINLESS STEEL AISI304 –
MAX. 250 BAR EXTRA 1.727 EURO TO
THE PRICE LIST**

- **KCAL/H:** 80,000
- **MIN PRESSURE INPUT (BAR):** 20
- **INLET:** M 22x1,5
- **OUTLET:** M 22x1,5
- **NET WEIGHT (KG):** 60
- **MAX. TEMPERATURE OUTLET (°C):** 150°C

PART NUMBER	L/MIN	BAR	VOLTS	HZ	PERFORMANCE (KW)	COIL LENGHT (MT)	COIL THIKNESS (MM)	DIESEL NOZZLE	A 50 HZ	DIESEL CONSUMPTION (LT/H)	Q-TY	€
3.026.02.068	21	250	230	50	93	35	2,6	2	2,4	7,55	1-2	2.077,00
											3-100	1.914,00
3.026.02.072	21	250	24	DC	93	35	2,6	2	17	7,56	1-2	2.507,00
											3-100	2.285,00
3.026.02.071	21	250	12	DC	93	35	2,6	2	30	7,55	1-2	2.507,00
											3-100	2.376,00
3.026.02.076	21	500	230	50	93	35	3	2	1,1	7,55	1-1	3.176,00
											2-100	2.762,00
3.026.02.092	21	250	230	50	93	35	2,6	2	1,1	7,55	1-2	2.245,00
											3-100	2.083,00
3.026.02.089	21	250	12	DC	93	35	2,6	2	30	7,55	1-2	2.677,00
											3-100	2.544,00

MEDIUM HEATERS

**COIL IN STAINLESS STEEL AISI304 –
MAX. 250 BAR EXTRA 1.727 EURO TO
THE PRICE LIST**

- **KCAL/H:** 90,000
- **MIN PRESSURE INPUT (BAR):** 20
- **INLET:** M 22x1,5
- **OUTLET:** M 22x1,5
- **NET WEIGHT (KG):** 62
- **MAX. TEMPERATURE OUTLET (°C):** 150°C



Packaging at cost

PART NUMBER	L/MIN	BAR	VOLTS	HZ	PERFORMANCE (KW)	COIL LENGHT (MT)	COIL THIKNESS (MM)	DIESEL NOZZLE	A 50 HZ	DIESEL CONSUMPTION (LT/H)	Q-TY	€
3.026.02.062	25	250	230	50	105	35	2,6	2,25	2,4	8,5	1-2	2.091,00
											3-100	1.914,00
3.026.02.045	25	250	24	DC	105	35	2,6	2,25	17	9,45	1-2	2.537,00
											3-100	2.279,00
3.026.02.040	25	250	12	DC	105	35	2,6	2,25	30	8,5	1-2	2.537,00
											3-100	2.291,00
3.026.02.065	25	350	230	50	105	35	2,6	2,25	2,4	9,45	1-2	2.805,00
											3-100	2.439,00
3.026.02.063	25	350	24	DC	105	35	2,6	2,25	17	8,5	1-2	3.314,00
											3-100	2.881,00
3.026.02.064	25	350	12	DC	105	35	2,6	2,25	30	8,5	1-2	3.314,00
											3-100	2.881,00

MEDIUM HEATERS + CENTERING RING



Packaging at cost

**COIL IN STAINLESS STEEL AISI304 –
MAX. 250 BAR EXTRA 1.727 EURO TO
THE PRICE LIST**

- **KCAL/H:** 90,000
- **MIN PRESSURE INPUT (BAR):** 20
- **INLET:** M 22x1,5
- **OUTLET:** M 22x1,5
- **NET WEIGHT (KG):** 265
- **MAX. TEMPERATURE OUTLET (°C):** 150°C

PART NUMBER	PORTATA LT_RPM1	BAR	VOLTS	HZ	PERFORMANCE (KW)	COIL LENGHT (MT)	COIL THICKNESS (MM)	DIESEL NOZZLE	A 50 HZ	DIESEL CONSUMPTION (LT/H)	Q-TY	€
3.026.02.105	25	350	220	50	105	38,5	2,77	2,25		8,5	1-2	2.973,00
											3-100	2.608,00
3.026.02.095	25	250	24	DC	105	35	2,6	2,25	12	8,5	1-2	2.706,00
											3-100	2.445,00
3.026.02.090	25	250	12	DC	105	35	2,6	2,25	30	8,5	1-2	2.705,00
											3-100	2.458,00
3.026.02.106	25	350	12	DC	105	35	3	2,25	30	8,5	1-2	3.483,00
											3-100	3.050,00

BIG HEATERS



Packaging at cost

**COIL IN STAINLESS STEEL AISI304 –
MAX. 250 BAR EXTRA 1.727 EURO TO
THE PRICE LIST**

- **KCAL/H:** 110,000
- **MIN PRESSURE INPUT (BAR):** 20
- **INLET:** M 22x1,5
- **OUTLET:** M 22x1,5
- **NET WEIGHT (KG):** 85
- **MAX. TEMPERATURE OUTLET (°C):** 150°C

PART NUMBER	L/MIN	BAR	VOLTS	HZ	PERFORMANCE (KW)	COIL LENGHT (MT)	COIL THICKNESS (MM)	DIESEL NOZZLE	A 50 HZ	DIESEL CONSUMPTION (LT/H)	Q-TY	€
3.026.02.042	30	350	12	DC	128	38,5	3	2,5	61	9,45	1-1	3.687,00
											2-100	3.205,00
3.026.02.043	30	350	24	DC	128	38,5	3	2,5	30	9,45	1-1	3.687,00
											2-100	3.205,00
3.026.02.046	30	350	230	50	128	38,5	3	2,5	2,4	9,45	1-1	3.208,00
											2-100	2.886,00
3.026.02.049	30	500	12	DC	128	38,5	3	2,5	61	9,45	1-1	4.597,00
											2-100	3.999,00
3.026.02.050	30	500	24	DC	128	38,5	3	2,5	30	9,45	1-1	4.597,00
											2-100	3.999,00
3.026.02.073	30	500	230	50	128	38,5	3	2,5	4	9,45	1-1	4.120,00
											2-100	3.583,00

BIG HEATERS + CENTERING RING



Packaging at cost

**COIL IN STAINLESS STEEL AISI304 –
MAX. 250 BAR EXTRA 1.727 EURO TO
THE PRICE LIST**

- **KCAL/H:** 110,000
- **MIN PRESSURE INPUT (BAR):** 20
- **INLET:** M 22x1,5
- **OUTLET:** M 22x1,5
- **NET WEIGHT (KG):** 85
- **MAX. TEMPERATURE OUTLET (°C):** 150°C

PART NUMBER	PORTATA LT_RPM1	BAR	VOLTS	HZ	PERFORMANCE (KW)	COIL LENGHT (MT)	COIL THICKNESS (MM)	DIESEL NOZZLE	A 50 HZ	DIESEL CONSUMPTION (LT/H)	Q-TY	€
3.026.02.094	30	350	12	DC	128	38,5	3	2,5	61	9,45	0-1	3.870,00
											2-100	3.388,00
3.026.02.088	30	350	24	DC	128	38,5	3	2,5	25	9,45	0-1	3.870,00
											2-100	3.388,00
3.026.02.091	30	500	220	50							1-2	4.301,00
											3-99	4.002,00

MAXI HEATERS



Packaging at cost

**COIL IN STAINLESS STEEL AISI304 –
MAX. 250 BAR EXTRA 3509 EURO TO
THE PRICE LIST**

- **KCAL/H:** 135,000
- **MIN PRESSURE INPUT (BAR):** 20
- **INLET:** M 22x1,5
- **OUTLET:** M 22x1,5
- **NET WEIGHT (KG):** 130
- **MAX. TEMPERATURE OUTLET (°C):** 150°C

PART NUMBER	L/MIN	BAR	VOLTS	HZ	PERFORMANCE (KW)	COIL LENGHT (MT)	COIL THICKNESS (MM)	DIESEL NOZZLE	A 50 HZ	DIESEL CONSUMPTION (LT/H)	Q-TY	€
3.026.02.110	40	350	230	50	157	48	3	3,5	3,8	13,23	1-1	4.274,00
											2-100	4.102,00
3.026.02.111	40	350	12	DC	157	48	3	3,5	62	13,23	1-1	4.751,00
											2-100	4.490,00
3.026.02.112	40	350	24	DC	157	48	3	3,5	30	13,23	1-1	4.751,00
											2-100	4.490,00
3.026.02.113	40	500	230	50	157	48	3	3,5	4	13,23	1-1	5.182,00
											2-100	5.009,00
3.026.02.114	40	500	12	DC	157	48	3	3,5	62	13,23	1-1	5.661,00
											2-100	5.487,00
3.026.02.115	40	500	24	DC	157	48	3	3,5	30	13,23	1-1	5.661,00
											2-100	5.487,00

ELECTRIC HEATERS



- MIN PRESSURE INPUT (BAR): 1
- NET WEIGHT (KG): 32

Packaging at cost

PART NUMBER	L/MIN	VOLTS	HZ	A 50 HZ	KW	MAX. TEMPERATURE OUTLET (°C)	INLET	OUTLET	Q-TY	€
3.026.04.087	12	400	50	37	24	85°C	G 3/4"	G 1/2"	1-2	3.325,00
									4-100	2.993,00
3.026.04.092	13	400	50	48	32	85°C	G 3/4"	G 1/2"	1-2	3.725,00
									3-100	3.353,00

HOTBOX 15 - 21 - 25 L



- **DIESEL TANK:** 16 L
- **MIN PRESSURE INPUT (BAR):** 20
- **INLET:** G 1/2"
- **OUTLET:** G 1/2"
- **NET WEIGHT (KG):** 85
- **MAX. TEMPERATURE OUTLET (°C):** 150°C

PART NUMBER	L/MIN	BAR	VOLTS	HZ	PERFORMANCE (KW)	COIL LENGHT (MT)	COIL THIKNESS (MM)	DIESEL NOZZLE	A 50 HZ	DIESEL CONSUMPTION (LT/H)	KCAL/H	€
3.064.04.009	15	250	12	DC	58,15	24	2,3	1,25	37	4,70	46,000	2.940,00
3.064.04.002	15	250	230	50	58,15	24	2,3	1,25	2,36	4,70	46,000	2.640,00
3.064.04.007	21	250	24	DC	93	35	2,6	2	16,5	7,55	80,000	3.025,00
3.064.04.004	21	250	230	50	93	35	2,6	2	2,36	7,55	80,000	2.705,00
3.064.04.010	25	250	12	DC	105	35	2,6	2,25	37	8,5	90,000	3.133,00
3.064.04.008	25	250	24	DC	105	35	2,6	2,25	16,5	8,5	90,000	3.123,00
3.064.04.006	25	250	230	50	105	35	2,6	2,25	2,36	8,5	90,000	2.716,00
3.064.04.015	25	350	230	50	105	35	2,6	2,25	2,36	8,5	90,000	3.231,00
3.064.04.016	25	500	230	50	105	35	3	2,25	2,36	8,5	90,000	3.807,00

FIREBOX 30 L



- **DIESEL TANK:** 16 L
- **MIN PRESSURE INPUT (BAR):** 20
- **INLET:** G 1/2"
- **OUTLET:** G 1/2"
- **NET WEIGHT (KG):** 85
- **MAX. TEMPERATURE OUTLET (°C):** 150°C

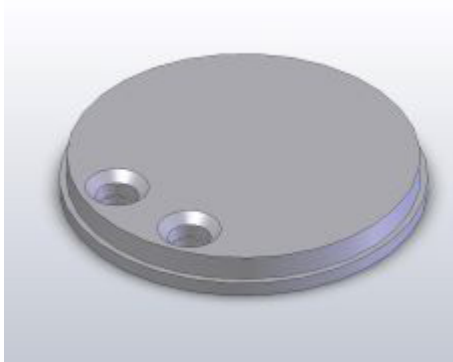
PART NUMBER	L/MIN	BAR	VOLTS	HZ	PERFORMANCE (KW)	COIL LENGHT (MT)	COIL THIKNESS (MM)	DIESEL NOZZLE	A 50 HZ	DIESEL CONSUMPTION (LT/H)	KCAL/H	€
3.064.04.038	30	500	12	DC	128	38,5	3	2,5	61	9,45	110,000	5.104,00
3.064.04.039	30	500	24	DC	128	38,5	3	2,5	30	9,45	110,000	5.104,00
3.064.04.040	30	500	230	50	128	38,5	3	2,5	4	9,45	110,000	4.770,00

ELECTRODS



PART NUMBER	MODEL	SMALL DIESEL	MEDIUM DIESEL	BIG DIESEL	MAXI DIESEL	SMALL GAS	MEDIUM GAS	BIG GAS	€
2.032.04.004	ELECTRODE 2 INSULATORS D.3	x	x	x	x				23,00
2.032.04.006	ELECTROD 8MM LPG BURNER					x	x	x	44,00
2.032.04.007	ELECTROD 100MM LPG BURNER					x	x	x	44,00

INSULATION BOTTOM



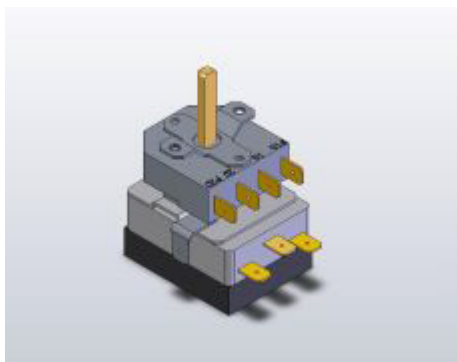
PART NUMBER	MODEL	SMALL DIESEL	MEDIUM DIESEL	BIG DIESEL	MAXI DIESEL	SMALL GAS	MEDIUM GAS	BIG GAS	€
1.094.04.005	INSULATOR BOILER BOTTOM PLATE 20-25LT.	x	x			x	x		40,00
1.094.04.013	THERMIC INSULATOR 1100° BOILER 30L			x	x			x	51,00

ELECTRIC CABLES



PART NUMBER	MODEL	SMALL DIESEL	MEDIUM DIESEL	BIG DIESEL	MAXI DIESEL	SMALL GAS	MEDIUM GAS	BIG GAS	€
2.020.04.035	ELECTRODS CABLES 90° L.600 PH2000 *TWO REQUIRED FOR EACH TRASF	X	X	X	X				10,00
2.020.04.012	CABLE HYP 1X1X D.7 MM600 + PIN	X	X						10,00
2.020.04.075	CABLE HYP 1X1 D.7 MM.700 + CONNECTION			X					10,00
2.020.04.104	CABLE FOR ELECTRODES					X	X	X	37,00
2.020.04.103	CABLE FOR ELECTRODES					X	X	X	37,00

THERMOSTAT



PART NUMBER	MODEL	SMALL DIESEL	MEDIUM DIESEL	BIG DIESEL	MAXI DIESEL	SMALL GAS	MEDIUM GAS	BIG GAS	€
4.031.04.003	THERMOSTAT 150°	X	X	X	X	X	X	X	33,00
4.030.04.007	TRANSFORMER HT **12VOLTS**	X	X	X	X				309,00
4.030.04.010	TR HT FIDA ELETTR.2x12 KV 30mA 230V TRK1-30CVD	X	X	X					53,00
4.030.04.022	TRANSFORMER 230V 50 / 60HZ 0.35A 2X12kV 30mA				X				111,00
4.030.04.016	TRANSFORMER HT 24 V	X	X	X	X				309,00
4.030.04.001	TRANSFORMER G1020C/S7C 400V 50HZ 2X5KV	X	X	X	X				98,00

DIESEL PUMP



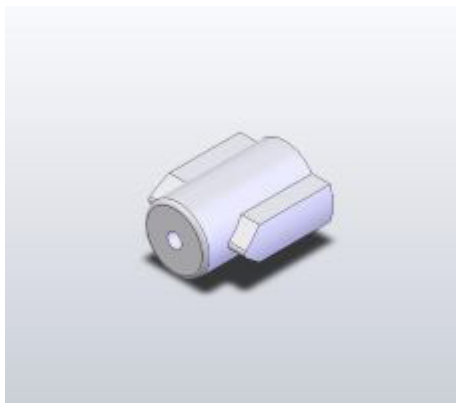
PART NUMBER	MODEL	SMALL DIESEL	MEDIUM DIESEL	BIG DIESEL	MAXI DIESEL	€
2.030.04.003	DIESEL PUMP FOR WSF			x		100,00
2.030.04.007	DIESEL PUMP CLOCKWISE ROTATION	x	x			100,00
2.030.04.008	DIESEL PUMP FOR 30 L BOILER 12/24V	x	x			120,00
2.030.04.006	DIESEL PUMP FOR 40 L BOILER (AC MOTORS)				x	120,00
2.030.04.009	DIESEL PUMP FOR BOILER 40 L 230/400V				x	120,00

COIL



PART NUMBER	MODEL	SMALL DIESEL	MEDIUM DIESEL	BIG DIESEL	MAXI DIESEL	SMALL GAS	MEDIUM GAS	BIG GAS	€
2.029.04.014	COIL 15 LITERS SHORT	x				x			317,00
2.029.04.008	COIL 35MT.SP.2,6*15/25LT*		x				x		462,00
2.029.04.010	COIL 21x2.77 38.5m 30l			x				x	985,00
2.029.04.024	COIL 15 L 24 MT 250 BAT WITH CENTERING RING	x				x			497,00
2.029.04.028	COIL 3/8 35MT/SS C14 15/25LT. 3MM + CENTERING RING 350 bar		x				x		733,00
2.029.04.021	COIL 30 L 28.5 M 500 BAR WITH CENTERING RING			x				x	1.200,00
2.029.04.022	COIL FOR 40 L 500 BAR 48 M				x				1.103,00

DIESEL PUMP COUPLING



PART NUMBER	MODEL	SMALL DIESEL	MEDIUM DIESEL	BIG DIESEL	MAXI DIESEL	€
1.098.02.001	COUPLING FOR DIESEL PUMP	x	x			2,00
1.098.04.004	JOINT FOR PUMP SP BOILER 30L			x	x	2,00

DAMPNER



PART NUMBER	MODEL	SMALL DIESEL	MEDIUM DIESEL	BIG DIESEL	MAXI DIESEL	SMALL GAS	MEDIUM GAS	BIG GAS	€
3.040.04.002	ACCUM.IDROP.HST 0.1-300BAR PREC.120BAR NO RECHARGABLE M18x1.5	x	x	x	x	x	x	x	130,00
3.040.04.003	ACCUM.IDROP.HSTX 0.1-210BAR PREC.120BAR INOX	x	x	x	x	x	x	x	987,00
3.040.04.005	EMPTY DUMPNER MIN.120 BAR	x	x	x	x	x	x	x	118,00

DIESEL NOZZLE



PART NUMBER	MODEL	SMALL DIESEL	MEDIUM DIESEL	BIG DIESEL	MAXI DIESEL	€
4.027.14.007	GASOIL NOZZLE 0,6 60° H					21,00
4.027.14.004	GASOIL NOZZLE 1 60°					21,00
4.027.14.005	GASOIL NOZZLE 1.25 60°	x				21,00
4.027.14.002	FUEL NOZZLE 1,50 60°					21,00
4.027.14.015	DIESEL NOZZLE 1.65 60°H EMPTY CONE					21,00
4.027.14.011	DIESEL NOZZLE 2 60°B		x			21,00
4.027.14.012	FUEL NOZZLE 2.25 60°B		x			21,00
4.027.14.018	FUEL NOZZLE 2:50 USGAL 60 ° B ALMOST FULL CONE			x		21,00
4.027.14.022	FUEL NOZZLE 3.5 60°S FULL CONE SUITABLE FOR 40LT BOILER				x	21,00

ELECTROVALVE



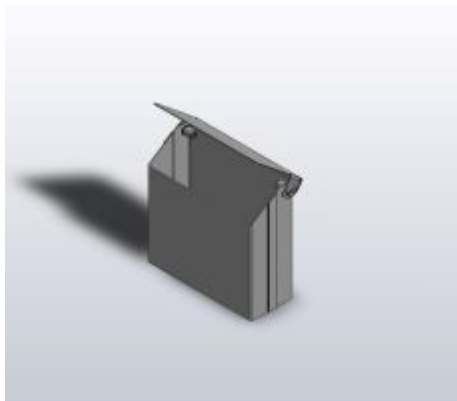
PART NUMBER	MODEL	SMALL DIESEL	MEDIUM DIESEL	BIG DIESEL	MAXI DIESEL	€
9.001.04.001	ELECTROVALVE DIESEL PUMP SP	x	x	x	x	22,00

ANTISCALE



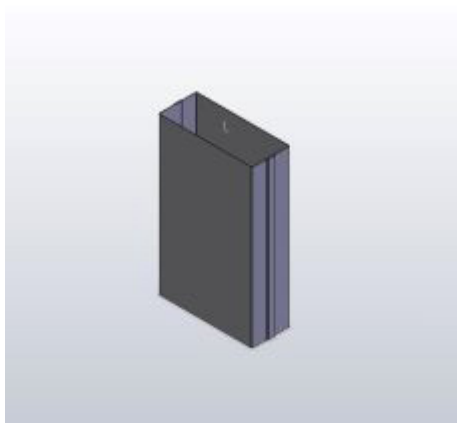
PART NUMBER	MODEL	SMALL DIESEL	MEDIUM DIESEL	BIG DIESEL	MAXI DIESEL	SMALL GAS	MEDIUM GAS	BIG GAS	€
3.060.04.001	ANTI LIMESTONE OXFORD (1LT)	x	x	x	x	x	x	x	13,00
4.085.04.001T	ANTISCALE OXFORD 25 KG (25 L) TANK	x	x	x	x	x	x	x	133,00

CHIMNEY COVER



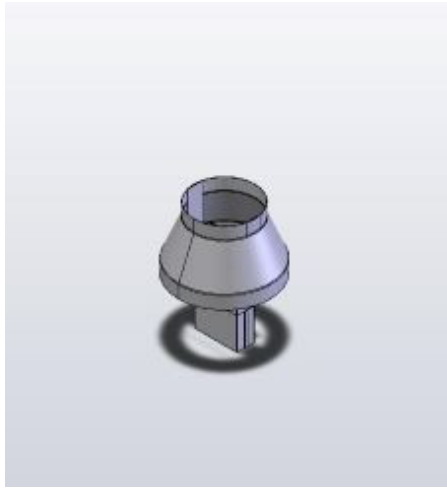
PART NUMBER	MODEL	SMALL DIESEL	MEDIUM DIESEL	BIG DIESEL	MAXI DIESEL	SMALL GAS	MEDIUM GAS	BIG GAS	€
2.012.02.001	COVER FOR ANTI-RAIN PIPE	x	x	x	x	x	x	x	65,00

CHIMNEY EXTENSION



PART NUMBER	MODEL	SMALL DIESEL	MEDIUM DIESEL	BIG DIESEL	MAXI DIESEL	SMALL GAS	MEDIUM GAS	BIG GAS	€
1.018.02.008	CHIMNEY EXTENTION W/PH	x	x	x	x	x	x	x	44,00

CHIMNEY EXTENSION



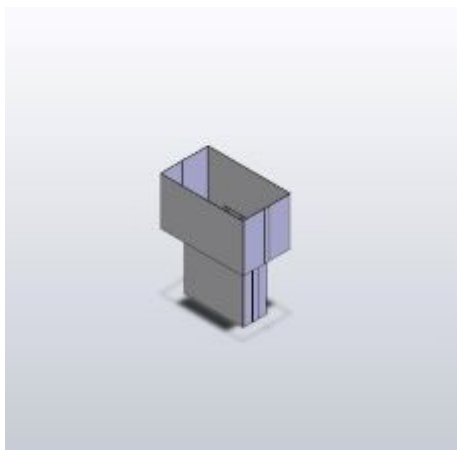
PART NUMBER	MODEL	BIG DIESEL	MAXI DIESEL	BIG GAS	€
3.037.02.006	CHIMNEY EXTENSION 240MM Ø197 VENTURI	x	x	x	94,00

CHIMNEY EXTENSION



PART NUMBER	MODEL	SMALL DIESEL	MEDIUM DIESEL	SMALL GAS	MEDIUM GAS	€
3.037.02.002	EXTENSION CHIMNEY 416MM Ø123 VENTURI	x	x	x	x	78,00

CHIMNEY EXTENSION



PART NUMBER	MODEL	BIG DIESEL	BIG GAS	€
3.037.02.007	REDUCTION CHEMNEY ANTI WIND *W6000*	x	x	94,00

FLOW SWITCH



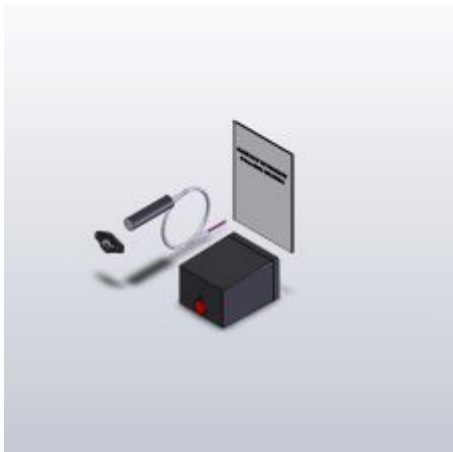
PART NUMBER	MODEL	SMALL DIESEL	MEDIUM DIESEL	BIG DIESEL	MAXI DIESEL	SMALL GAS	MEDIUM GAS	BIG GAS	€
3.054.04.002	FLOW-SWITCH 3/8"G-MM 1/4"G-F *OT*	x	x			x	x	x	119,00
3.054.04.003	FLOW SWITCH FL7 3/8"			x				x	119,00
3.054.04.004	FLOW SWITCH FL7 INOX 50MPA				x				146,00

LEVEL SWITCH



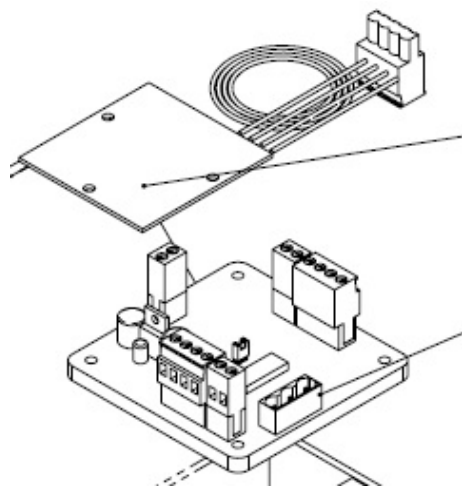
PART NUMBER	MODEL	SMALL DIESEL	MEDIUM DIESEL	BIG DIESEL	MAXI DIESEL	€
3.030.02.007	FUEL LEVEL SWITCH L.2000 NYLON	x	x	x	x	52,00
9.022.02.001	MAGIC EYE KIT FLAME CONTROL*MAGIC EYE*	x	x	x	x	59,00

KIT FLAME CONTROL BRAHMA



PART NUMBER	MODEL	SMALL DIESEL	MEDIUM DIESEL	BIG DIESEL	MAXI DIESEL	€
9.021.02.003	KIT 12V FLAME CONTROL *BRAHMA*	x	x	x	x	364,00
9.021.02.005	KIT 220V FLAMME CONTROL *BRAHMA*	x	x	x	x	312,00

MAZZONI ELECTRONIC CARD



PART NUMBER	MODEL	SMALL DIESEL	MEDIUM DIESEL	BIG DIESEL	MAXI DIESEL	€
9.021.04.020	KIT ELECTRONIC PLATE FOR FB AND DIESEL BOILERS 12-24 V	x	x	x	x	189,00
9.021.04.022	ELECTRIC CARD FOR BOILER/FIREBOX 220 V	x	x	x	x	189,00
9.021.04.021	KIT ELECTRONIC CARD MCC400 V FOR BOILERS AND FIREBOX	x	x	x	x	189,00

ENGINE CARBS

PART NUMBER	MODEL	SMALL DIESEL	MEDIUM DIESEL	€
9.SPZ3012	ENGINE CARBS	x	x	19,00

ENGINE CARBS

PART NUMBER	MODEL	BIG DIESEL	MAXI DIESEL	€
9.SPZ3011	MOTOR CARBONS 30 L	x	x	19,00

DIODE

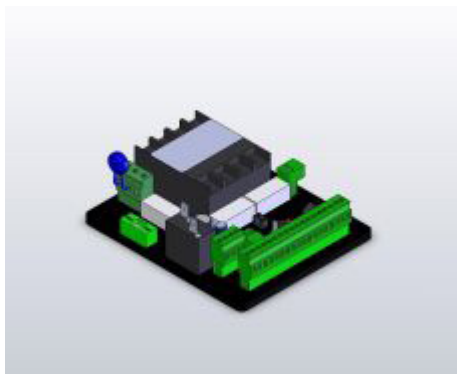
PART NUMBER	MODEL	SMALL DIESEL	MEDIUM DIESEL	BIG DIESEL	MAXI DIESEL	€
4.061.02.008	DIODO ZENER 25-32V	x	x	x	x	33,00

CARD FOR TENSION REGULATION



PART NUMBER	MODEL	SMALL DIESEL	MEDIUM DIESEL	BIG DIESEL	MAXI DIESEL	€
3.024.02.062	CARD FOR TENSION REGULATION 12/24 V	x	x	x	x	195,00

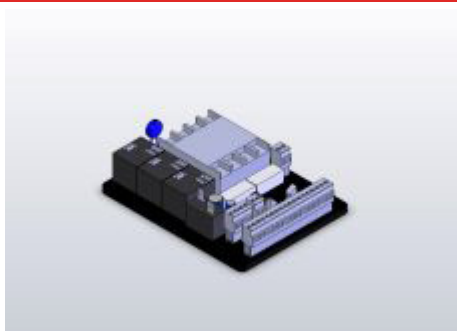
ELECTRONIC CARDS



MAZZONI : K5000-6000-7000-8000-9000 / KC5000-5050-6000 / FX6000 / W / WX / WSF

PART NUMBER	MODEL	€
3.024.02.043	ELECTRONIC CARD MCC30RM	189,00

ELECTRONIC CARDS



MAZZONI: PH3025-3040-3060-4000 / W4000-4050

PART NUMBER	MODEL	€
3.024.02.049	ELECTRONIC CARD TST+SSD+CF+AC+CO MCC110-RM 40A	188,00

ELECTRONIC CARDS



MAZZONI: MH3061-4000

PART NUMBER	MODEL	€
3.024.02.055	ELECTRONIC CARD **MCC13RM** 40A	77,00

ELECTRONIC CARDS

MAZZONI: PH1000 / NEWPH2000 TST
OLD / VECCHIO



PART NUMBER	MODEL	€
3.024.02.054	ELECTRONIC CARD *MCC3RM** 110/220V 40A	77,00

ELECTRONIC CARDS

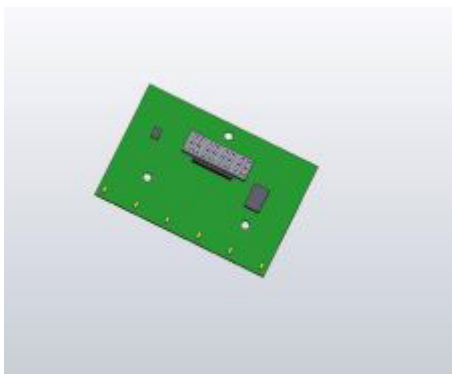
MAZZONI: KC3000-25-40-50-05-55
/ KS3000-50-60 / KC4000-50-05-
55 / KM300-3050-400 / KX305-55 /
KX4005-55 / FX3000-50 / FX4000-50
/ KS300-400-450-500-540-600



PART NUMBER	MODEL	€
3.024.02.050	CARD TST MCC2-RM-40A 230-400V 2RELE-40A CO	77,00
3.024.02.056	ELECTRICAL CARD TST MCC2-RM 230/400 40A - HT3	77,00

ELECTRONIC CARDS

MAZZONI: PH3025-3040-3060-4000
/ W4000-4050 / W5000-5025-5050-
5090-6000 / W41-400 / WX4000-
4050-5000-5025-5050-6000 /
WSF3060-4000-4050-5000-5025-
5050-6000



PART NUMBER	MODEL	€
3.024.02.032	LED CARD MCC30RM	30,00

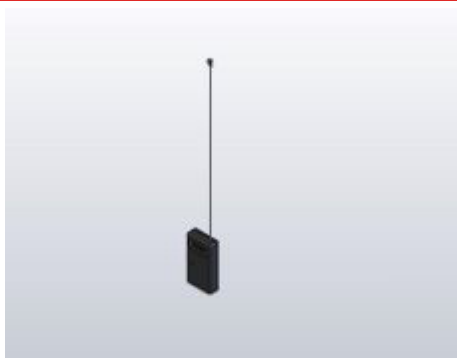
ELECTRONIC CARDS



MAZZONI: K5000-50 / K6000-7000-8000-9000-5090 / FX6000 / KC5000-25-50 / KC6000 / PH3025-3040-3060-4000 / W4000-4050 / W5000-5025-5050-5090-6000 / W41-400 / WX4000-4050-5000-5025-5050-6000 / WSF3060-4000-4050-5000-5025-5050-6000

PART NUMBER	MODEL	€
2.020.32.002	CABLE FOR LED CARD	8,00

ELECTRONIC CARDS



FOR ALL PROFESSIONAL H.P. WASHERS

PART NUMBER	MODEL	€
3.061.04.002	HOURS READER FOR E.C. MCC110/115	64,00

THERMAL PROTECTION IN THE WINDINGS

ELEASTIC COUPLING

- IP: 44
- POLY: 4



Packaging at cost

PART NUMBER	VOLTS	PHASE	HZ	HZ	RPM 50 HZ	RPM 60 HZ	KW	A 50 HZ	A 60 HZ	MAZZONI PUMP	Q-TY	€
2.081.12.016	230	1	50	60	1450	1740	2,2	12,5	14,1	PMD	1-4	662,00
											5-9	618,00
											10-100	578,00
2.081.12.018	230	1	--	60	--	1740	2,2	--	14,6	PMD	1-4	662,00
											5-9	618,00
											10-100	578,00
2.081.12.019	230/400	3	50	60	1450	1740	4	9,2	15,9	PMD	1-4	690,00
											5-9	645,00
											10-100	602,00
2.081.12.004	230/400	3	50	60	1450	1740	4	9,2	16	MMD / GM - 45	1-4	695,00
											5-9	650,00
											10-100	607,00

MEC112

THERMAL PROTECTION IN THE WINDINGS

ELEASTIC COUPLING

- IP: 44
- POLY: 4



Packaging at cost

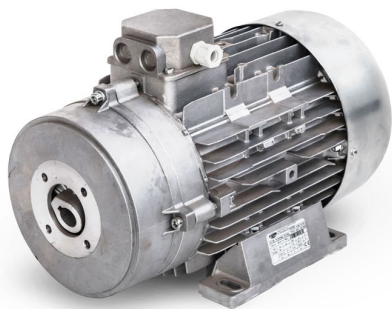
PART NUMBER	VOLTS	PHASE	HZ	HZ	RPM 50 HZ	RPM 60 HZ	KW	A 50 HZ	A 60 HZ	MAZZONI PUMP	Q-TY	€
2.081.12.020	230	1	50	60	1450	1740	3	16	16	PMD	1-4	889,00
											5-9	831,00
											10-100	776,00
2.081.12.013	230/400	3	50	60	1450	1740	4	8	13,84	MMD	1-4	756,00
											5-9	705,00
											10-100	658,00
2.081.12.026	230/400	3	50	60	1450	1740	4	8	13,9	PMD	1-4	756,00
											5-9	705,00
											10-100	658,00
2.081.12.001	230/400	3	50	60	1450	1740	5,5	11	19	MMD	1-4	771,00
											5-9	720,00
											10-100	673,00
2.081.12.007	230	3	--	60	--	1740	5,5	--	24	MMD	1-4	771,00
											5-9	720,00
											10-100	673,00
2.081.12.021	230/400	3	50	60	1450	1740	5,5	11	19	PMD	1-4	771,00
											5-9	720,00
											10-100	673,00

MEC132 - 7.5KW

THERMAL PROTECTION IN THE WINDINGS

ELEASTIC COUPLING

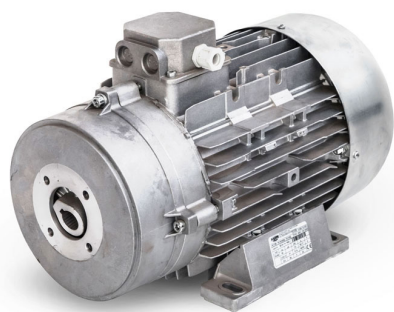
- IP: 44
- POLY: 4



Packaging at cost

PART NUMBER	VOLTS	PHASE	HZ	HZ	RPM 50 HZ	RPM 60 HZ	KW	A 50 HZ	A 60 HZ	MAZZONI PUMP	Q-TY	€
2.081.12.002	230/400	3	50	60	1450	1740	7,5	14,7	25,43	MMD	1-3	1.081,00
											4-7	1.010,00
											8-100	944,00
2.081.12.027	230/400	3	50	60	1450	1740	7,5	14,7	25,43	GM / XM - L. 45 mm	1-3	1.081,00
											4-7	1.010,00
											8-100	944,00

MEC132 - 11KW



THERMAL PROTECTION IN THE WINDINGS

ELEASTIC COUPLING

- IP: 44
- POLY: 4

Packaging at cost

PART NUMBER	VOLTS	PHASE	HZ	HZ	RPM 50 HZ	RPM 60 HZ	KW	A 50 HZ	A 60 HZ	MAZZONI PUMP	Q-TY	€
2.081.12.017	400/700	3	50	60	1450	1740	11	20,8	12	GM / XM - L. 55 mm	1-3	1.541,00
											4-7	1.440,00
											8-100	1.345,00
2.081.12.003	400/700	3	50	60	1450	1740	11	20,8	12	MMD	1-3	1.541,00
											4-7	1.440,00
											8-100	1.345,00
2.081.12.015	230/400	3	50	60	1450	1740	11	20,5	12	MMD	1-3	1.541,00
											4-7	1.440,00
											8-100	1.345,00
2.081.12.028	230/400	3	50	60	1450	1740	11	20,5	35,44	GM / XM - L. 45 mm	1-3	1.541,00
											4-7	1.440,00
											8-100	1.345,00
2.081.12.029	230/400	3	50	60	1450	1740	11	21	36	GM / XM - L. 55 mm	1-3	1.541,00
											4-7	1.440,00
											8-100	1.345,00
2.081.12.010	400/700	3	50	60	1450	1740	11	20,8	12	GM / XM - L. 45 mm	1-3	1.664,00
											4-7	1.555,00
											8-100	1.453,00

MEC160



THERMAL PROTECTION IN THE WINDINGS

ELEASTIC COUPLING

- IP: 44
- POLY: 4

Packaging at cost

PART NUMBER	VOLTS	PHASE	HZ	HZ	RPM 50 HZ	RPM 60 HZ	KW	A 50 HZ	A 60 HZ	MAZZONI PUMP	Q-TY	€
2.081.12.030	400/700	3	50	60	1450	1740	15	28	16,2	GM / XM - L. 45 / 55	1-100	2.985,00

THERMAL PROTECTION IN THE WINDINGS

ELEASTIC COUPLING

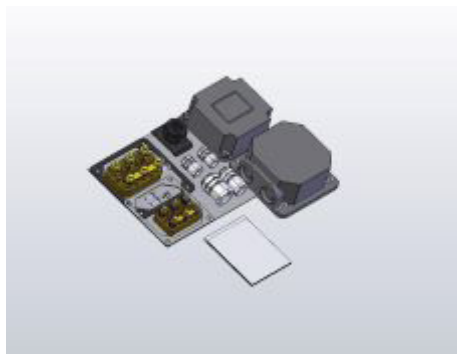
- **IP:** 54
- **POLY:** 4



Packaging at cost

PART NUMBER	VOLTS	PHASE	HZ	HZ	RPM 50 HZ	RPM 60 HZ	KW	A 50 HZ	A 60 HZ	MAZZONI PUMP	Q-TY	€
2.081.12.031	400/700	3	50	60	1450	1740	22	39,5	23	GM / XM - L. 45 / 55	1-100	3.772,00

KIT MOTOR CONNECTION



PART NUMBER	MODEL	€
9.011.02.002	MOTOR CONNECTIONS FOR MEC100- MEC112-MEC132	40,00

DAMPNER FOR COUPLING



PART NUMBER	MODEL	€
1.157.02.003	DAMPER FOR ELASTIC COUPLING M100/112	12,00
1.157.02.004	SHOCK ABSORBER FOR ELASTIC JOINT M132	13,00
4.049.02.001	ANELLO AMMORTIZZATORE PER GINTO GE-T 48-60	20,00

COUPLINGS



PART NUMBER	MODEL	€
3.055.02.003	ELASTIC COUPLING M100	70,00
3.055.02.004	ELASTIC COUPLING M100 COMPLETE SST	76,00
3.055.02.002	ELASTIC COUPLING D.24- D.35 M112	70,00
3.055.02.001	ELASTIC COUPLING M132	78,00
3.055.02.010	ELASTIC COUPLING FOR MEC 160	260,00
3.055.02.009	ELASTIC COUPLING MEC 180	325,00

PUMP+MOTOR+ELECTRICAL BOX+BY PASS+MANOMETER

HIGHT TEMPERATURE VERSION : +
702,00 EURO PRICE LIST



Packaging at cost

PART NUMBER	L/MIN	BAR	VOLTS	PHASE	KW	HZ	RPM 50 HZ	NET WEIGHT (KG)	Q-TY	€
3.071.02.020	10	150	230	1	2,2	50	1450	25	1-3	1.392,00
									4-7	1.297,00
									8-100	1.205,00
3.071.02.033	15	150	400	3	4	50	1450	25	1-3	1.403,00
									4-7	1.311,00
									8-100	1.217,00
3.071.02.021	13	170	400	3	4	50	1450	25	1-3	1.403,00
									4-7	1.311,00
									8-100	1.217,00
3.071.02.022	15	210	400	3	5,5	50	1450	32	1-3	1.656,00
									4-7	1.547,00
									8-100	1.438,00
3.071.02.023	21	150	400	3	5,5	50	1450	32	1-3	1.656,00
									4-7	1.547,00
									8-100	1.438,00
3.071.02.024	21	200	400	3	7,5	50	1450	54	1-2	2.203,00
									3-5	2.056,00
									6-100	1.911,00
3.071.02.025	25	250	400	3	11	50	1450	65	1-2	2.850,00
									3-5	2.660,00
									6-100	2.470,00
3.071.02.026	30	210	400	3	11	50	1450	65	1-2	2.850,00
									3-5	2.660,00
									6-100	2.470,00

PUMP+MOTOR+BASE COVER

HIGHT TEMPERATURE VERSION : +
171,00 EURO PRICE LIST



Packaging at cost

PART NUMBER	L/MIN	BAR	VOLTS	PHASE	KW	HZ	RPM 50 HZ	NET WEIGHT (KG)	Q-TY	€
3.071.02.014	10	125	230	1	2,2	50	1450	25	1-3	1.066,00
									4-7	996,00
									8-100	923,00
3.071.02.015	13	170	400	3	4	50	1450	25	1-3	1.066,00
									4-7	996,00
									8-100	923,00
3.071.02.010	15	200	400	3	5,5	50	1450	32	1-3	1.290,00
									4-7	1.205,00
									8-100	1.120,00
3.071.02.009	21	150	400	3	5,5	50	1450	32	1-3	1.290,00
									4-7	1.205,00
									8-100	1.120,00
3.071.02.011	21	200	400	3	7,5	50	1450	54	1-2	1.553,00
									3-5	1.449,00
									6-100	1.346,00
3.071.02.012	25	250	400	3	11	50	1450	65	1-2	2.195,00
									3-5	2.048,00
									6-100	1.903,00
3.071.02.013	30	210	400	3	11	50	1450	65	1-2	2.195,00
									3-5	2.048,00
									6-100	1.903,00

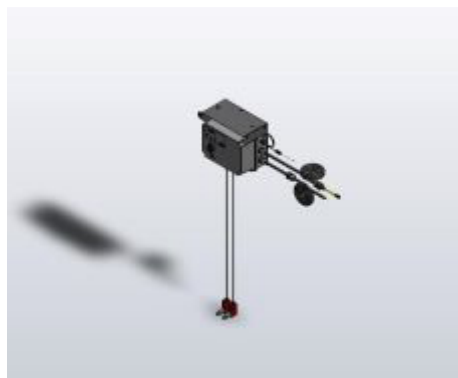
PUMP+MOTOR+BASE COVER



Packaging at cost

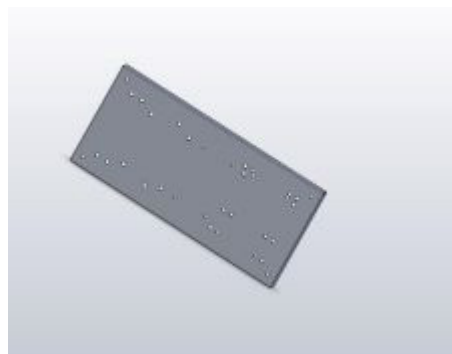
PART NUMBER	L/MIN	BAR	VOLTS	PHASE	KW	HZ	RPM 50 HZ	NET WEIGHT (KG)	Q-TY	€
3.071.02.149	15	500	400/700	3	15	50	1450	132	1-2	3.649,00
									3-10	3.414,00
3.071.02.150	21	500	400/700	3	22	50	1450	172	1-2	4.171,00
									3-10	3.900,00
3.071.02.151	43	170	400/700	3	15	50	1450	134	1-2	3.527,00
									3-10	3.235,00

SPARE PARTS FOR MOTORPUMPS



PART NUMBER	MODEL	€
2.031.04.206	ELECTRICAL PANEL *KXS* M160	714,00
2.031.04.202	ELECTRICAL BOX*KXS*	1.927,00

SPARE PARTS FOR MOTORPUMPS



PART NUMBER	MODEL	€
1.008.04.041	PIASTRA PER MOTORE M112 - M132+W163 e WS104	260,00
1.011.04.100	SUPPORT PLATE KXSB MOTOR	208,00

SPARE PARTS FOR MOTORPUMPS



PART NUMBER	MODEL	€
1.008.04.079	MOUNTED BRACKET FOR ELECTRIC PUMP (MEC100 - 112)	204,00
1.008.04.080	MOUNTED BRACKET FOR ELECTRIC PUMP (MEC132)	303,00

ANTIVIBRATION



PART NUMBER	MODEL	€
1.011.04.060	SUPPORTO ANTIVIBR.50x40 M10x27 60Sh	12,00

HYDRAULIC MOTORPUMPS - DIRECT CONNECTION



Packaging at cost

PART NUMBER	MODEL	BAR	L/MIN	RPM	OIL PRESSURE (BAR)	OIL FLOW (L/MIN)	INLET	OUTLET	NET WEIGHT (KG)	Q-TY	€
3.006.42.002	MP 15250 24CC SAE-A	200	15	1450	150	36	G 1/2	G 3/8	17	1-3	962,00
										4-100	895,00
3.006.42.003	MP 21250 24CC SAE-A	200	21	1450	200	36	G 1/2	G 3/8	17	1-3	962,00
										4-100	895,00

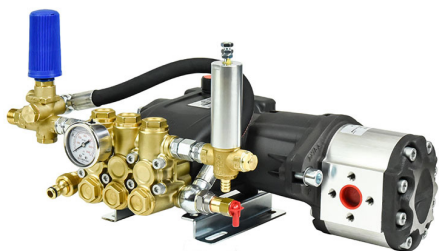
HYDRAULIC MOTORPUMPS - WITH ELASTIC COUPLING



Packaging at cost

PART NUMBER	MODEL	BAR	L/MIN	RPM	OIL PRESSURE (BAR)	OIL FLOW (L/MIN)	INLET	OUTLET	NET WEIGHT (KG)	Q-TY	€
3.006.42.008	MP 15250 24CC SEA-A	200	15	1450	150	36	G 1/2	G 3/8	22	1-3	1.349,00
										4-100	1.200,00
3.006.42.007	MP 21250 24CC SAE-A	200	21	1450	180	36	G 1/2	G 3/8	22	1-3	1.349,00
										4-100	1.200,00
3.006.42.004	MP 25300 46CC SAE-B	300	25	1450	150	70	G 3/4	G 1/2	22	1-3	2.136,00
										4-100	2.015,00
3.006.42.017										1-1	3.850,00
										2-10	3.773,00

PUMP+HYDRAULIC MOTOR+BY PASS+SECURITY VALVE+MANOMETER



Packaging at cost

PART NUMBER	MODEL	BAR	L/MIN	RPM	OIL PRESSURE (BAR)	OIL FLOW (L/MIN)	INLET	OUTLET	NET WEIGHT (KG)	Q-TY	€
3.071.32.001	MP HY 15250 24cc SAE-A	250	15	1450	150	36	G 1/2	G 3/8	20	1-3	1.614,00
										4-100	1.532,00
3.071.32.002	MP HY 21-250 24cc SAE-A	200	21	1450	180	36	G 1/2	G 3/8	20	1-3	1.614,00
										4-100	1.532,00
3.071.32.004	MP HY 54-150 46cc SAE-B	150	54	1450	180	75	G 3/4	G 1/2	20	1-3	2.441,00
										4-100	2.245,00



- **MAX INPUT TEMPERATURE:** 65°C - 149°F
- **MIN INPUT PRESSURE (BAR):** 0,2
- **OIL CAPACITY (LT):** 0,4
- **INLET:** G 1/2"
- **OUTLET:** G 3/8"
- **NET WEIGHT (KG):** 7,5

Packaging at cost

PART NUMBER	MODEL	BAR	L/MIN - 1000 RPM	RPM 50 HZ -1450 RPM	HP -1450 RPM	KW - 1450 RPM	L/MIN -1200 RPM	RPM 60 HZ 1740	HP - 1740 RPM	KW - 1740 RPM	Ø SHAFT	SHAFT LEIGHT	SHAFT	PLUNGER Ø	€
P3.010.002	PM8170R	170	8,5	1450	3,75	2,80	10,2	1740	4,50	3,36	24mm	40mm	Destro/ Right	18mm	396,00
P3.010.003	PM10170R	170	10	1450	4,42	3,30	12	1740	5,30	3,95	24mm	40mm	Destro/ Right	18mm	396,00
P3.010.004	PM11170R	170	11	1450	4,86	3,62	13,2	1740	5,83	4,35	24mm	40mm	Destro/ Right	18mm	396,00
P3.010.005	PM12170R	170	12	1450	5,30	3,95	14,40	1740	6,36	4,75	24mm	40mm	Destro/ Right	18mm	396,00
P3.010.006	PM13170R	170	13	1450	5,74	4,28	15,6	1740	6,89	5,14	24mm	40mm	Destro/ Right	18mm	396,00
P3.010.007	PM14170R	170	14	1450	6,18	4,61	16,80	1740	7,42	5,54	24mm	40mm	Destro/ Right	18mm	396,00
P3.010.001	PM15170R	170	15	1450	6,62	4,94	18	1740	7,95	5,93	24mm	40mm	Destro/ Right	18mm	396,00
P3.010.009	PM8170L	170	8,50	1450	3,75	2,80	10,20	1740	4,50	3,36	24mm	40mm	Sinistro/ Left	18mm	396,00
P3.010.010	PM10170L	170	10	1450	4,42	3,30	12	1740	5,30	3,95	24mm	40mm	Sinistro/ Left	18mm	396,00
P3.010.011	PM11170L	170	11	1450	4,86	3,62	13,2	1740	5,83	4,35	24mm	40mm	Sinistro/ Left	18mm	396,00
P3.010.013	PM13170L	170	13	1450	5,74	4,28	15,60	1740	6,89	5,14	24mm	40mm	Sinistro/ Left	18mm	396,00
P3.010.014	PM14170L	170	14	1450	6,18	4,61	16,80	1740	7,42	5,54	24mm	40mm	Sinistro/ Left	18mm	396,00
P3.010.008	PM15170L	170	15	1450	6,62	4,94	18	1740	7,95	5,93	24mm	40mm	Sinistro/ Left	18mm	396,00

PMD

- **MAX INPUT TEMPERATURE:** 65°C - 149° F
- **MIN INPUT PRESSURE (BAR):** 0,2
- **OIL CAPACITY (LT):** 0,4
- **INLET:** G 1/2"
- **OUTLET:** G 3/8"
- **NET WEIGHT (KG):** 7,5



Packaging at cost

PART NUMBER	MODEL	BAR	L/MIN -1450 RPM	RPM 50 HZ	HP -1450 RPM	KW - 1450 RPM	L/MIN -1740 RPM	RPM 60 HZ	HP - 1740 RPM	KW - 1740 RPM	Ø SHAFT	SHAFT LEIGHT	SHAFT PLUNGER Ø	€	
P3.010.021	PMD15200R	200	15	1450	7,88	5,91	18	1740	9,45	7,09	24mm	40mm	Destro/ Right	18mm	396,00
P3.010.022	PMD8200R	200	8,5	1450	4,45	3,34	10,2	1740	5,34	4,01	24mm	40mm	Destro/ Right	18mm	396,00
P3.010.023	PMD10200R	200	10	1450	5,27	3,95	12	1740	6,32	4,47	24mm	40mm	Destro/ Right	18mm	396,00
P3.010.024	PMD11200R	200	11	1450	5,97	4,48	13,2	1740	7,17	5,38	24mm	40mm	Destro/ Right	18mm	396,00
P3.010.025	PMD12200R	200	12	1450	6,30	4,73	14,40	1740	7,56	5,67	24mm	40mm	Destro/ Right	18mm	396,00
P3.010.026	PMD13200R	200	13	1450	6,79	5,09	15,6	1740	8,15	6,11	24mm	40mm	Destro/ Right	18mm	396,00
P3.010.027	PMD14200R	200	14	1450	7,39	5,54	16,80	1740	8,86	6,65	24mm	40mm	Destro/ Right	18mm	396,00
P3.010.028	PMD15200L	200	15	1450	7,88	5,91	18	1740	9,45	7,09	24mm	40mm	Sinistro/ Left	18mm	396,00
P3.010.029	PMD8200L	200	8,50	1450	4,45	3,34	10,20	1740	5,34	4,01	24mm	40mm	Sinistro/ Left	18mm	396,00
P3.010.030	PMD10200L	200	10	1450	5,27	3,95	12	1740	6,32	4,47	24mm	40mm	Sinistro/ Left	18mm	396,00
P3.010.031	PMD11200L	200	11	1450	5,97	4,48	13,2	1740	7,17	5,38	24mm	40mm	Sinistro/ Left	18mm	396,00
P3.010.032	PMD12200L	200	12	1450	6,30	4,73	14,40	1740	7,56	5,67	24mm	40mm	Sinistro/ Left	18mm	396,00
P3.010.033	PM13200L	200	13	1450	6,79	5,09	15,60	1740	8,15	6,11	24mm	40mm	Sinistro/ Left	18mm	396,00
P3.010.034	PM14200L	200	14	1450	7,39	5,54	16,80	1740	8,86	6,65	24mm	40mm	Sinistro/ Left	18mm	396,00

- **MAX INPUT TEMPERATURE:** 65°C - 149°F
- **MIN INPUT PRESSURE (BAR):** 0,2
- **OIL CAPACITY (LT):** 0,4
- **INLET:** G 1/2"
- **OUTLET:** G 3/8"
- **NET WEIGHT (KG):** 7,5



Packaging at cost

PART NUMBER	MODEL	BAR	L/MIN	RPM	HP	KW -	L/MIN	RPM	HP -	KW -	Ø	SHAFT LEIGHT	SHAFT	PLUNGER Ø	€
			-1450 RPM	50 HZ	-1450 RPM	1450 RPM	-1740 RPM	60 HZ	1740 RPM	1740 RPM					
P3.012.003	PM11170R CW	170	11	1450	4,86	3,62	13,2	1740	5,83	4,35	24mm	40mm	Destro/ Right	18mm	438,00
P3.012.005	PM13170R CW	170	13	1450	5,74	4,28	15,6	1740	6,89	5,14	24mm	40mm	Destro/ Right	18mm	438,00
P3.012.006	PM14170R CW	170	14	1450	6,18	4,61	16,8	1740	7,42	5,54	24mm	40mm	Destro/ Right	18mm	438,00
P3.012.007	PM15170R CW	170	15	1450	6,62	4,94	18	1740	7,95	5,93	24mm	40mm	Destro/ Right	18mm	438,00
P3.012.011	PM12170L CW	170	12	1450	5,30	3,95	14,4	1740	6,36	4,75	24mm	40mm	Sinistro/ Left	18mm	438,00
P3.012.012	PM13170L CW	170	13	1450	5,74	4,28	15,6	1740	6,89	5,14	24mm	40mm	Sinistro/ Left	18mm	438,00
P3.012.013	PM14170L CW	170	14	1450	6,18	4,61	16,8	1740	7,42	5,54	24mm	40mm	Sinistro/ Left	18mm	438,00
P3.012.014	PM15170L CW	170	15	1450	6,62	4,94	18	1740	7,95	5,93	24mm	40mm	Sinistro/ Left	18mm	438,00

PMD CW

- **MAX INPUT TEMPERATURE:** 65°C - 149° F
- **MIN INPUT PRESSURE (BAR):** 0,2
- **OIL CAPACITY (LT):** 0,4
- **INLET:** G 1/2"
- **OUTLET:** G 3/8"
- **NET WEIGHT (KG):** 7,5



Packaging at cost

PART NUMBER	MODEL	BAR	L/MIN -1450 RPM	RPM 50 HZ	HP -1450 RPM	KW - 1450 RPM	L/MIN -1740 RPM	RPM 60 HZ	HP - 1740 RPM	KW - 1740 RPM	Ø SHAFT	SHAFT LEIGHT	SHAFT Ø	PLUNGER Ø	€
P3.012.021	PMD CW 15200R	200	15	1450	7,88	5,91	18	1740	9,45	7,09	24mm	40mm	Destro/ Right	18mm	438,00
P3.012.022	PMD CW 8200R	200	8,5	1450	4,45	3,34	10,2	1740	5,34	4,01	24mm	40mm	Destro/ Right	18mm	438,00
P3.012.023	PMD CW 10200R	200	10	1450	5,27	3,95	12	1740	6,32	4,47	24mm	40mm	Destro/ Right	18mm	438,00
P3.012.024	PMD CW 11200R	200	11	1450	5,97	4,48	13,2	1740	7,17	5,38	24mm	40mm	Destro/ Right	18mm	438,00
P3.012.025	PMD CW 12200R	200	12	1450	6,30	4,73	14,40	1740	7,56	5,67	24mm	40mm	Destro/ Right	18mm	438,00
P3.012.026	PMD CW 13200R	200	13	1450	6,79	5,09	15,6	1740	8,15	6,11	24mm	40mm	Destro/ Right	18mm	438,00
P3.012.027	PMD CW 14200R	200	14	1450	7,39	5,54	16,80	1740	8,86	6,65	24mm	40mm	Destro/ Right	18mm	438,00
P3.012.028	PMD CW 15200L	200	15	1450	7,88	5,91	18	1740	9,45	7,09	24mm	40mm	Sinistro/ Left	18mm	438,00
P3.012.029	PMD CW 8200L	200	8,50	1450	4,45	3,34	10,20	1740	5,34	4,01	24mm	40mm	Sinistro/ Left	18mm	438,00
P3.012.030	PMD CW 10200L	200	10	1450	5,27	3,95	12	1740	6,32	4,47	24mm	40mm	Sinistro/ Left	18mm	438,00
P3.012.031	PMD CW 11200L	200	11	1450	5,97	4,48	13,2	1740	7,17	5,38	24mm	40mm	Sinistro/ Left	18mm	438,00
P3.012.032	PMD CW 12200L	200	12	1450	6,30	4,73	14,40	1740	7,56	5,67	24mm	40mm	Sinistro/ Left	18mm	438,00
P3.012.033	PMD CW 13200L	200	13	1450	6,79	5,09	15,60	1740	8,15	6,11	24mm	40mm	Sinistro/ Left	18mm	438,00
P3.012.034	PMD CW 14200L	200	14	1450	7,39	5,54	16,80	1740	8,86	6,65	24mm	40mm	Sinistro/ Left	18mm	438,00

- **MAX INPUT TEMPERATURE:** 85°C - 185°F
- **MIN INPUT PRESSURE (BAR):** 3
- **OIL CAPACITY (LT):** 0,4
- **INLET:** G 1/2"
- **OUTLET:** G 3/8"
- **NET WEIGHT (KG):** 7,5



Packaging at cost

PART NUMBER	MODEL	BAR	L/MIN	RPM	HP	KW -	L/MIN	RPM	HP -	KW -	Ø	SHAFT	SHAFT	PLUNGER	€
			-1450	50 HZ	-1450	1450	-1740	60 HZ	1740	1740					
P3.011.002	TPM8150R	150	8,50	1450	3,31	2,47	10,20	1740	3,97	2,96	24mm	40mm	Destro/ Right	18mm	496,00
P3.011.003	TPM10150R	150	10	1450	3,90	2,91	12	1740	4,68	3,49	24mm	40mm	Destro/ Right	18mm	496,00
P3.011.005	TPM12150R	150	12	1450	4,68	3,49	14,40	1740	5,61	4,18	24mm	40mm	Destro/ Right	18mm	496,00
P3.011.007	TPM14150R	150	14	1450	5,45	4,06	16,80	1740	6,55	4,88	24mm	40mm	Destro/ Right	18mm	496,00
P3.011.009	TPM8150L	150	8,50	1450	3,31	2,47	10,20	1740	3,97	2,96	24mm	40mm	Sinistro/ Left	18mm	496,00
P3.011.012	TPM12150L	150	12	1450	4,68	3,49	14,40	1740	5,61	4,18	24mm	40mm	Sinistro/ Left	18mm	496,00

TPMD

- **MAX INPUT TEMPERATURE:** 85°C - 185°F
- **MIN INPUT PRESSURE (BAR):** 3
- **OIL CAPACITY (LT):** 0,4
- **INLET:** G 1/2"
- **OUTLET:** G 3/8"
- **NET WEIGHT (KG):** 7,5



MAZZONI PUMPS

PART NUMBER	MODEL	BAR	L/MIN -1450 RPM	RPM 50 HZ	HP -1450 RPM	KW - 1450 RPM	L/MIN -1740 RPM	RPM 60 HZ	HP - 1740 RPM	KW - 1740 RPM	Ø SHAFT	SHAFT LEIGHT	SHAFT	PLUNGER Ø	€
P3.011.021	PMD 15150R HT	150	15	1450	5,84	4,35	18	1740	7,01	5,22	24mm	40mm	Destro/ Right	18mm	496,00
P3.011.022	PMD 8150R HT	150	8,50	1450	3,31	2,47	10,20	1740	3,97	2,96	24mm	40mm	Destro/ Right	18mm	496,00
P3.011.023	PMD 10150R HT	150	10	1450	3,90	2,91	12	1740	4,68	3,49	24mm	40mm	Destro/ Right	18mm	496,00
P3.011.024	PMD 11150R HT	150	11	1450	4,29	3,20	13,20	1740	5,14	3,83	24mm	40mm	Destro/ Right	18mm	496,00
P3.011.025	PMD 12150R HT	150	12	1450	4,68	3,49	14,40	1740	5,61	4,18	24mm	40mm	Destro/ Right	18mm	496,00
P3.011.026	PMD 13150R HT	150	13	1450	5,06	3,77	15,6	1740	6,08	4,53	24mm	40mm	Destro/ Right	18mm	496,00
P3.011.027	PMD 14150R HT	150	14	1450	5,45	4,06	16,80	1740	6,55	4,88	24mm	40mm	Destro/ Right	18mm	496,00
P3.011.028	PMD 15150L HT	150	15	1450	5,84	4,35	18	1740	7,01	5,22	24mm	40mm	Sinistro/ Left	18mm	496,00
P3.011.029	PMD 8150L HT	150	8,50	1450	3,31	2,47	10,20	1740	3,97	2,96	24mm	40mm	Sinistro/ Left	18mm	496,00
P3.011.030	PMD 10150L HT	150	10	1450	3,31	2,47	12	1740	4,68	3,49	24mm	40mm	Sinistro/ Left	18mm	496,00
P3.011.031	PMD 11150L HT	150	11	1450	4,29	3,20	13,20	1740	5,14	3,83	24mm	40mm	Sinistro/ Left	18mm	496,00
P3.011.032	PMD 12150L HT	150	12	1450	4,68	3,49	14,40	1740	5,61	4,18	24mm	40mm	Sinistro/ Left	18mm	496,00
P3.011.033	PMD 13150L HT	150	13	1450	5,06	3,77	15,60	1740	6,08	4,53	24mm	40mm	Sinistro/ Left	18mm	496,00
P3.011.034	PMD 14150L HT	150	14	1450	5,45	4,06	16,80	1740	6,55	4,88	24mm	40mm	Sinistro/ Left	18mm	496,00

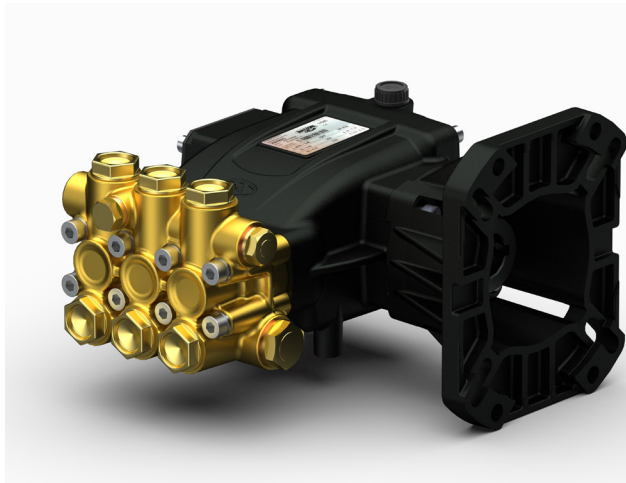


Packaging at cost

- **MAX INPUT TEMPERATURE:** 65°C-149°F
- **MIN INPUT PRESSURE (BAR):** 0,2
- **OIL CAPACITY (LT):** 0,4
- **INLET:** G 1/2"
- **OUTLET:** G 3/8"
- **NET WEIGHT (KG):** 7,5

PART NUMBER	MODEL	BAR	L/MIN	RPM	HP	KW	Ø SHAFT	SHAFT LEIGHT	SHAFT	PLUNGER Ø	€
P3.010.301	PM-EDM E3 8200R	200	8,50	3400	4,42	3,29	19mm	65mm	Destro/Right	14mm	440,00
P3.010.302	PM-EDM E3 11200R	200	11	3400	5,71	4,26	19mm	65mm	Destro/Right	14mm	440,00
P3.010.303	PM-EDM E3 14200R	200	14	3400	7,27	5,42	19mm	65mm	Destro/Right	14mm	440,00
P3.010.304	PM-EDM E3 8200L	200	8,50	3400	4,42	3,29	19mm	65mm	Sinistro/Left	14mm	440,00
P3.010.305	PM-EDM E3 11200L	200	11	3400	5,71	4,26	19mm	65mm	Sinistro/Left	14mm	440,00
P3.010.306	PM-EDM E3 14200L	200	14	3400	7,27	5,42	19mm	65mm	Sinistro/Left	14mm	440,00

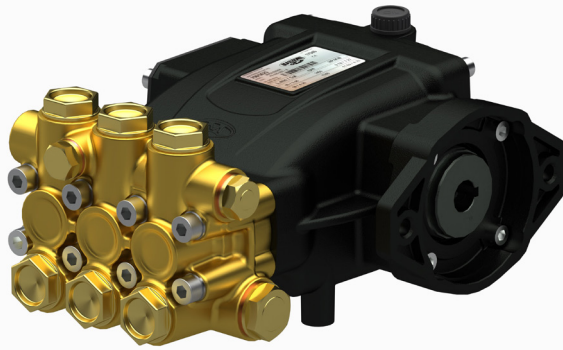
PM-EDM-E4



- **MAX INPUT TEMPERATURE:** 65°C-149°F
- **MIN INPUT PRESSURE (BAR):** 0,2
- **OIL CAPACITY (LT):** 0,4
- **INLET:** G 1/2
- **OUTLET:** G 3/8
- **NET WEIGHT (KG):** 7,5

Packaging at cost

PART NUMBER	MODEL	BAR	L/MIN	RPM	HP	KW	Ø SHAFT	SHAFT LEIGHT	SHAFT	PLUNGER Ø	€
P3.010.307	PM-EDM E4 8200R	200	8,50	3400	4,42	3,29	25,40mm	65mm	Destro/Right	14mm	453,00
P3.010.308	PM-EDM E4 10200R	200	10	3400	5,19	3,87	25,40mm	65mm	Destro/Right	14mm	453,00
P3.010.309	PM-EDM E4 11200R	200	11,50	3400	5,97	4,45	25,40mm	65mm	Destro/Right	14mm	453,00
P3.010.310	PM-EDM E4 14200R	200	14	3400	7,27	5,42	25,40mm	65mm	Destro/Right	14mm	453,00
P3.010.311	PM-EDM E4 15200R	200	15	3400	7,79	5,81	25,40mm	65mm	Destro/Right	14mm	453,00
P3.010.312	PM-EDM E4 8200L	200	8,50	3400	4,42	3,29	25,40mm	65mm	Sinistro/Left	14mm	453,00
P3.010.313	PM-EDM E4 10200L	200	10	3400	5,19	3,87	25,40mm	65mm	Sinistro/Left	14mm	453,00
P3.010.314	PM-EDM E4 11200L	200	11,50	3400	5,97	4,45	25,40mm	65mm	Sinistro/Left	14mm	453,00
P3.010.315	PM-EDM E4 14200L	200	14	3400	7,27	5,42	25,40mm	65mm	Sinistro/Left	14mm	453,00
P3.010.316	PM-EDM E4 15200L	200	15	3400	7,79	5,81	25,40mm	65mm	Sinistro/Left	14mm	453,00



Packaging at cost

- **MAX INPUT TEMPERATURE:** 65°C-149°F
- **MIN INPUT PRESSURE (BAR):** 0,2
- **OIL CAPACITY (LT):** 0,4
- **INLET:** G 1/2
- **OUTLET:** G 3/8
- **NET WEIGHT (KG):** 8,5

PART NUMBER	MODEL	BAR	L/MIN	RPM	HP	KW	Ø SHAFT	SHAFT LEIGHT	SHAFT	PLUNGER Ø	€
P3.010.201	PM HY 8170R	170	8,50	1450	3,75	2,80	15,9 mm	41mm	Destro/Right	18mm	421,00
P3.010.202	PM HY 10170R	170	10	1450	4,42	3,30	15,9mm	41mm	Destro/Right	18mm	421,00
P3.010.203	PM HY 11170R	170	11	1450	4,86	3,62	15,9mm	41mm	Destro/Right	18mm	421,00
P3.010.204	PM HY 12170R	170	12	1450	5,30	3,95	15,9mm	41mm	Destro/Right	18mm	421,00
P3.010.205	PM HY 13170R	170	13	1450	5,74	4,28	15,9mm	41mm	Destro/Right	18mm	421,00
P3.010.206	PM HY 14170R	170	14	1450	6,18	4,61	15,9mm	41mm	Destro/Right	18mm	421,00
P3.010.207	PM HY 15170R	170	15	1450	6,62	4,94	15,9mm	41mm	Destro/Right	18mm	421,00
P3.010.208	PM HY 8170L	170	8,50	1450	3,75	2,80	15,9mm	41mm	Sinistro/Left	18mm	421,00
P3.010.209	PM HY 10170L	170	10	1450	4,42	3,30	15,9mm	41mm	Sinistro/Left	18mm	421,00
P3.010.210	PM HY 11170L	170	11	1450	4,86	3,62	15,9mm	41mm	Sinistro/Left	18mm	421,00
P3.010.211	PM HY 12170L	170	12	1450	5,30	3,95	15,9mm	41mm	Sinistro/Left	18mm	421,00
P3.010.212	PM HY 13170L	170	13	1450	5,74	4,28	15,9mm	41mm	Sinistro/Left	18mm	421,00
P3.010.213	PM HY 14170L	170	14	1450	6,18	4,61	15,9mm	41mm	Sinistro/Left	18mm	421,00
P3.010.214	PM HY 15170L	170	15	1450	6,62	4,94	15,9mm	41mm	Sinistro/Left	18mm	421,00

MMD

- **MAX INPUT TEMPERATURE:** 65°C - 149°F
- **MIN INPUT PRESSURE (BAR):** 0,2
- **OIL CAPACITY (LT):** 0,7
- **INLET:** G 1/2"
- **OUTLET:** G 3/8"
- **NET WEIGHT (KG):** 10,4



Packaging at cost

PART NUMBER	MODEL	BAR	L/MIN -1450 RPM	RPM 50 HZ	HP -1450 RPM	KW - 1450 RPM	L/MIN -1740 RPM	RPM 60 HZ	HP - 1740 RPM	KW - 1740 RPM	Ø SHAFT	SHAFT LEIGHT	SHAFT PLUNGER Ø	€	
P3.020.003-2	MMD12250R	250	12	1450	7,79	5,82	14,40	1740	9,35	6,98	24mm	40mm	Destro/ Right	20mm	478,00
P3.020.002-2	MMD15250R	250	15	1450	9,74	7,27	18	1740	11,69	8,72	24mm	40mm	Destro/ Right	20mm	478,00
P3.020.004-2	MMD18250R	250	18	1450	11,69	8,72	21,60	1740	14,03	10,47	24mm	40mm	Destro/ Right	20mm	478,00
P3.020.001-2	MMD21250R	250	21	1450	13,64	10,18	25,20	1740	16,36	12,21	24mm	40mm	Destro/ Right	20mm	478,00
P3.020.008-2	MMD12250L	250	12	1450	7,79	5,82	14,40	1740	9,35	6,98	24mm	40mm	Sinistro/ Left	20mm	478,00
P3.020.006-2	MMD15250L	250	15	1450	9,74	7,27	18	1740	11,69	8,72	24mm	40mm	Sinistro/ Left	20mm	478,00
P3.020.009-2	MMD18250L	250	18	1450	11,69	8,72	21,60	1740	14,03	10,47	24mm	40mm	Sinistro/ Left	20mm	478,00
P3.020.007-2	MMD21250L	250	21	1450	13,64	10,18	25,20	1740	16,36	12,21	24mm	40mm	Sinistro/ Left	20mm	478,00

MMD - 1000 RPM

- **MAX INPUT TEMPERATURE:** 65°C - 149°F
- **MIN INPUT PRESSURE (BAR):** 0,2
- **OIL CAPACITY (LT):** 0,7
- **INLET:** G 1/2"
- **OUTLET:** G 3/8"
- **NET WEIGHT (KG):** 10,4



Packaging at cost

PART NUMBER	MODEL	BAR	L/MIN - 1000 RPM	RPM 50 HZ	HP - 1000 RPM	KW - 1000 RPM	L/MIN -1200 RPM	RPM 60 HZ	HP - 1200 RPM	KW - 1200 RPM	Ø SHAFT	SHAFT LEIGHT	SHAFT PLUNGER Ø	€	
P3.020.005-2	MMD15250R	250	15	1000	9,74	7,27	18	1200	11,69	8,72	24mm	40mm	Destro/ Right	20mm	478,00
P3.020.010-2	MMD15250L	250	15	1000	9,74	7,27	18	1200	11,69	8,72	24mm	40mm	Sinistro/ Left	20mm	478,00

- **MAX INPUT TEMPERATURE:** 65°C - 149°F
- **MIN INPUT PRESSURE (BAR):** 0,2
- **OIL CAPACITY (LT):** 0,7
- **INLET:** G 1/2"
- **OUTLET:** G 3/8"
- **NET WEIGHT (KG):** 10,4



Packaging at cost

PART NUMBER	MODEL	BAR	L/MIN		HP		KW -		L/MIN		HP -		Ø	SHAFT LEIGHT	SHAFT	PLUNGER Ø	€
			-1450 RPM	50 HZ	-1450 RPM	1450 RPM	-1740 RPM	60 HZ	1740 RPM	1740 RPM							
P3.022.001-2	MMD CW 12250R	250	12	1450	7,79	5,82	14,40	1740	9,35	6,98	24mm	40mm	Destro/Right	20mm		531,00	
P3.022.002-2	MMD CW 15250R	250	15	1450	9,74	7,27	18	1740	11,69	8,72	24mm	40mm	Destro/Right	20mm		531,00	
P3.022.003-2	MMD CW 18250R	250	18	1450	11,60	8,72	21,6	1740	14,03	10,47	24mm	40mm	Destro/Right	20mm		531,00	
P3.022.004-2	MMD CW 21250R	250	21	1450	13,64	10,18	25,20	1740	16,36	12,21	24mm	40mm	Destro/Right	20mm		531,00	
P3.022.005-2	MMD CW 12250L	250	12	1450	7,79	5,82	14,40	1740	9,35	6,98	24mm	40mm	Sinistro/Left	20mm		531,00	
P3.022.006-2	MMD CW 15250L	250	15	1450	9,74	7,27	18	1740	11,69	8,72	24mm	40mm	Sinistro/Left	20mm		531,00	
P3.022.007-2	MMD CW 18250L	250	18	1450	11,60	8,72	21,6	1740	14,03	10,47	24mm	40mm	Sinistro/Left	20mm		531,00	
P3.022.008-2	MMD CW 21250L	250	21	1450	13,64	10,18	25,20	1740	16,36	12,21	24mm	40mm	Sinistro/Left	20mm		531,00	

MMD CW - 1000 RPM



- **MAX INPUT TEMPERATURE:** 65°C - 149°F
- **MIN INPUT PRESSURE (BAR):** 0,2
- **OIL CAPACITY (LT):** 0,7
- **INLET:** G 1/2"
- **OUTLET:** G 3/8"
- **NET WEIGHT (KG):** 10,4

Packaging at cost

PART NUMBER	MODEL	BAR	L/MIN - 1000 RPM	RPM 50 HZ	HP - 1000 RPM	KW - 1000 RPM	L/MIN -1200 RPM	RPM 60 HZ	HP - 1200 RPM	KW - 1200 RPM	Ø SHAFT	SHAFT LEIGHT	SHAFT PLUNGER Ø	€	
P3.022.009-2	MMD CW 15250R	250	15	1000	9,74	7,27	18	1200	11,69	8,72	24mm	40mm	Destro/ Right	20mm	531,00
P3.022.010-2	MMD CW 15250L	250	15	1000	9,74	7,27	18	1200	11,69	8,72	24mm	40mm	Sinistro/ Left	20mm	531,00

TMM



- **MAX INPUT TEMPERATURE:** 85°C-185°F
- **MIN INPUT PRESSURE (BAR):** 3
- **OIL CAPACITY (LT):** 0,7
- **INLET:** G 1/2"
- **OUTLET:** G 3/8"
- **NET WEIGHT (KG):** 10,4

Packaging at cost

PART NUMBER	MODEL	BAR	L/MIN -1450 RPM	RPM 50 HZ	HP - -1450 RPM	KW - 1450 RPM	L/MIN -1740 RPM	RPM 60 HZ	HP - 1740 RPM	KW - 1740 RPM	Ø SHAFT	SHAFT LEIGHT	SHAFT PLUNGER Ø	€	
P3.021.003-2	TMM12200R	200	12	1450	6,23	4,65	14,4	1740	7,48	5,58	24mm	40mm	Destro/ Right	20mm	596,00
P3.021.002-2	TMM15200R	200	15	1450	7,79	5,82	18	1740	9,35	6,98	24mm	40mm	Destro/ Right	20mm	596,00
P3.021.004-2	TMM18200R	200	18	1450	9,35	6,98	21,6	1740	11,22	8,37	24mm	40mm	Destro/ Right	20mm	596,00
P3.021.001-2	TMM21200R	200	21	1450	10,91	8,14	25,2	1740	13,09	9,77	24mm	40mm	Destro/ Right	20mm	596,00
P3.021.008-2	TMM12200L	200	12	1450	6,23	4,65	14,40	1740	7,48	5,58	24mm	40mm	Sinistro/ Left	20mm	596,00
P3.021.006-2	TMM15200L	200	15	1450	7,79	5,82	18	1740	9,35	6,98	24mm	40mm	Sinistro/ Left	20mm	596,00
P3.021.009-2	TMM18200L	200	18	1450	9,35	6,98	21,60	1740	11,22	8,37	24mm	40mm	Sinistro/ Left	20mm	596,00
P3.021.007-2	TMM21200L	200	21	1450	10,91	8,14	25,20	1740	13,09	9,77	24mm	40mm	Sinistro/ Left	20mm	596,00

TMM - 1000 RPM

- **MAX INPUT TEMPERATURE:** 85°C-185°F
- **MIN INPUT PRESSURE (BAR):** 3
- **OIL CAPACITY (LT):** 0,7
- **INLET:** G 1/2
- **OUTLET:** G 3/8
- **NET WEIGHT (KG):** 10,4



Packaging at cost

PART NUMBER	MODEL	BAR	L/MIN - 1000 RPM	RPM 50 HZ	HP - 1000 RPM	KW - 1000 RPM	L/MIN -1200 RPM	RPM 60 HZ	HP - 1200 RPM	KW - 1200 RPM	Ø SHAFT	SHAFT LEIGHT	SHAFT	PLUNGER Ø	€
P3.021.005-2	TMM15200R	200	15	1000	7,79	5,82	18	1200	9,35	6,98	24mm	40mm	Destro/ Right	20mm	596,00
P3.021.010-2	TMM15200L	200	15	1000	7,79	5,82	18	1200	9,35	6,98	24mm	40mm	Sinistro/ Left	20mm	596,00

MMX

PUMPS CAN BE USED WITH CHEMICAL AND SALT WATER

- **MAX INPUT TEMPERATURE:** 85°C-185°F
- **MIN INPUT PRESSURE (BAR):** 3
- **OIL CAPACITY (LT):** 0,7
- **INLET:** G 1/2
- **OUTLET:** G 3/8
- **NET WEIGHT (KG):** 10,4



Packaging at cost

PART NUMBER	MODEL	BAR	L/MIN -1450 RPM	RPM 50 HZ	HP - -1450 RPM	KW - 1450 RPM	L/MIN -1740 RPM	RPM 60 HZ	HP - 1740 RPM	KW - 1740 RPM	Ø SHAFT	SHAFT LEIGHT	SHAFT	PLUNGER Ø	€
P3.023.003-2	MMX12200R	200	12	1450	6,23	4,64	14,40	1740	7,48	5,57	24mm	40mm	Destro/ Right	20mm	1.816,00
P3.023.002-2	MMX15200R	200	15	1450	7,79	5,80	18	1740	9,35	6,97	24mm	40mm	Destro/ Right	20mm	1.816,00
P3.023.004-2	MMX18200R	200	18	1450	9,35	6,97	21,6	1740	11,22	8,36	24mm	40mm	Destro/ Right	20mm	1.816,00
P3.023.001-2	MMX21200R	200	21	1450	10,91	8,13	25,2	1740	13,09	9,75	24mm	40mm	Destro/ Right	20mm	1.816,00
P3.023.008-2	MMX12200L	200	12	1450	6,23	4,64	14,40	1740	7,48	5,57	24mm	40mm	Sinistro/ Left	20mm	1.816,00
P3.023.006-2	MMX15200L	200	15	1450	7,79	5,80	18	1740	9,35	6,97	24mm	40mm	Sinistro/ Left	20mm	1.816,00
P3.023.009-2	MMX18200L	200	18	1450	9,35	6,97	21,60	1740	11,22	8,36	24mm	40mm	Sinistro/ Left	20mm	1.816,00
P3.023.007-2	MMX21200L	200	21	1450	10,90	8,12	25,20	1740	13,09	9,75	24mm	40mm	Sinistro/ Left	20mm	1.816,00

MMX - 1000 RPM



PUMPS CAN BE USED WITH CHEMICAL AND SALT WATER

- **MAX INPUT TEMPERATURE:** 85°C-185°F
- **MIN INPUT PRESSURE (BAR):** 3
- **OIL CAPACITY (LT):** 0,7
- **INLET:** G 1/2
- **OUTLET:** G 3/8
- **NET WEIGHT (KG):** 10,4

Packaging at cost

PART NUMBER	MODEL	BAR	L/MIN - 1000 RPM	RPM 50 HZ	HP - 1000 RPM	KW - 1000 RPM	L/MIN -1200 RPM	RPM 60 HZ	HP - 1200 RPM	KW - 1200 RPM	Ø SHAFT	SHAFT LEIGHT	SHAFT PLUNGER Ø	€	
P3.023.005-2	MMX15200R	200	15	1000	7,79	5,80	18	1200	9,35	6,97	24mm	40mm	Destro/ Right	20mm	1.816,00
P3.023.010-2	MMX15200L	200	15	1000	7,79	5,80	18	1200	9,35	6,97	24mm	40mm	Sinistro/ Left	20mm	1.816,00

MMD EDM



- **MAX INPUT TEMPERATURE:** 65°C-149°F
- **MIN INPUT PRESSURE (BAR):** 0,2
- **OIL CAPACITY (LT):** 0,7
- **INLET:** G 1/2
- **OUTLET:** G 3/8
- **NET WEIGHT (KG):** 11,4

Packaging at cost

PART NUMBER	MODEL	BAR	L/MIN	RPM	HP	KW	Ø SHAFT	SHAFT LEIGHT	SHAFT	PLUNGER Ø	€
P3.020.301	MMD-EDM E4 13275R	275	13,50	3400	9,64	7,18	25,40mm	93mm	Destro/ Right	15mm	576,00
P3.020.302	MMD-EDM E4 16275R	275	16	3400	11,4	8,5	25,40mm	93mm	Destro/ Right	15mm	576,00
P3.020.303	MMD-EDM E4 18275R	275	18,3	3400	13,07	9,74	25,40mm	93mm	Destro/ Right	15mm	576,00
P3.020.304	MMD-EDM E4 21275R	275	20,9	3400	14,92	11,12	25,40mm	93mm	Destro/ Right	15mm	576,00
P3.020.305	MMD-EDM E4 13275L	275	13,5	3400	9,64	7,18	25,40mm	93mm	Sinistro/ Left	15mm	576,00
P3.020.306	MMD-EDM E4 16275L	275	16	3400	11,42	8,51	25,40mm	93mm	Sinistro/ Left	15mm	576,00
P3.020.307	MMD-EDM E4 18275L	275	18,3	3400	13,07	9,74	25,40mm	93mm	Sinistro/ Left	15mm	576,00
P3.020.308	MMD-EDM E4 21275L	275	20,9	3400	14,92	11,12	25,40mm	93mm	Sinistro/ Left	15mm	576,00



Packaging at cost

- **MAX INPUT TEMPERATURE:** 65°C-149°F
- **MIN INPUT PRESSURE (BAR):** 0,2
- **OIL CAPACITY (LT):** 0,7
- **INLET:** G 1/2
- **OUTLET:** G 3/8
- **NET WEIGHT (KG):** 11,4

PART NUMBER	MODEL	BAR	L/MIN	RPM	HP	KW	Ø SHAFT	SHAFT LEIGHT	SHAFT	PLUNGER Ø	€
P3.020.201	MMD HY 12250R	250	12	1450	9,35	6,98	15,9mm	41mm	Destro/Right	20mm	550,00
P3.020.202	MMD HY 15250R	250	15	1450	11,69	8,72	15,9mm	41mm	Destro/Right	20mm	550,00
P3.020.203	MMD HY 18250R	250	18	1450	14,03	10,47	15,9mm	41mm	Destro/Right	20mm	550,00
P3.020.204	MMD HY 21250R	250	21	1450	16,36	12,21	15,9mm	41mm	Destro/Right	20mm	550,00
P3.020.205	MMD HY 12250L	250	12	1450	9,35	6,98	15,9mm	41mm	Sinistro/Left	20mm	550,00
P3.020.206	MMD HY 15250L	250	15	1450	11,69	8,72	15,9mm	41mm	Sinistro/Left	20mm	550,00
P3.020.207	MMD HY 18250L	250	18	1450	14,03	10,47	15,9mm	41mm	Sinistro/Left	20mm	550,00
P3.020.208	MMD HY 21250L	250	21	1450	16,36	12,21	15,9mm	41mm	Sinistro/Left	20mm	550,00

GM

- **MAX INPUT TEMPERATURE:** 65°C-149°F
- **MIN INPUT PRESSURE (BAR):** 0,2
- **OIL CAPACITY (LT):** 1,2
- **INLET:** G 3/4
- **OUTLET:** G 1/2
- **NET WEIGHT (KG):** 19



Packaging at cost

PART NUMBER	MODEL	BAR	L/MIN -1450 RPM	RPM 50 HZ	HP -1450 RPM	KW - 1450 RPM	L/MIN -1740 RPM	RPM 60 HZ	HP - 1740 RPM	KW - 1740 RPM	Ø SHAFT	SHAFT LEIGHT	SHAFT PLUNGER Ø	€	
P3.030.001-1	GM18300R	300	18	1450	14,03	10,45	21,60	1740	16,83	12,54	24mm	45mm	Destro/ Right	20mm	866,00
P3.030.002-1	GM22300R	300	22	1450	17,14	12,77	26,40	1740	20,57	15,33	24mm	45mm	Destro/ Right	20mm	866,00
P3.030.003-1	GM25300R	300	25	1450	19,48	14,51	30	1740	23,38	17,42	24mm	45mm	Destro/ Right	20mm	866,00
P3.030.005-1	GM27300R	300	27	1450	21,04	15,67	32,40	1740	25,25	18,81	24mm	55mm	Destro/ Right	20mm	866,00
P3.030.006-1	GM30250R	250	30	1450	19,48	14,51	36	1740	23,38	17,42	24mm	45mm	Destro/ Right	22mm	866,00
P3.030.008-1	GM33250R	250	33	1450	21,43	15,96	39,60	1740	25,71	19,16	24mm	55mm	Destro/ Right	22mm	866,00
P3.030.009-1	GM35170R	170	35	1450	15,45	11,51	42	1740	18,55	13,82	24mm	45mm	Destro/ Right	25mm	866,00
P3.030.010-1	GM40170R	170	40	1450	17,66	13,16	48	1740	21,19	15,79	24mm	45mm	Destro/ Right	25mm	866,00
P3.030.012-1	GM43170R	170	43	1450	18,99	14,15	51,6	1740	22,78	16,97	24mm	55mm	Destro/ Right	25mm	866,00
P3.030.015-1	GM18300L	300	18	1450	14,03	10,45	21,60	1740	16,83	12,54	24mm	45mm	Sinistro/ Left	20mm	866,00
P3.030.016-1	GM22300L	300	22	1450	17,14	12,77	26,40	1740	20,57	15,33	24mm	45mm	Sinistro/ Left	20mm	866,00
P3.030.017-1	GM25300L	300	25	1450	19,48	14,51	30	1740	23,38	17,42	24mm	45mm	Sinistro/ Left	20mm	866,00
P3.030.019-1	GM27300L	300	27	1450	21,04	15,67	32,40	1740	25,25	18,81	24mm	55mm	Sinistro/ Left	20mm	866,00
P3.030.020-1	GM30250L	250	30	1450	19,48	14,51	36	1740	23,38	17,42	24mm	45mm	Sinistro/ Left	22mm	866,00
P3.030.022-1	GM33250L	250	33	1450	21,43	15,96	39,60	1740	25,71	19,16	24mm	55mm	Sinistro/ Left	22mm	866,00
P3.030.023-1	GM35170L	170	35	1450	15,45	11,51	42	1740	18,55	13,82	24mm	45mm	Sinistro/ Left	25mm	866,00
P3.030.024-1	GM40170L	170	40	1450	17,66	13,16	48	1740	21,19	15,79	24mm	45mm	Sinistro/ Left	25mm	866,00
P3.030.026-1	GM43170L	170	43	1450	18,99	14,15	51,60	1740	22,78	16,97	24mm	55mm	Sinistro/ Left	25mm	866,00



- **MAX INPUT TEMPERATURE:** 65°C-149°F
- **MIN INPUT PRESSURE (BAR):** 1
- **OIL CAPACITY (LT):** 1,2
- **INLET:** G 3/4
- **OUTLET:** G 1/2
- **NET WEIGHT (KG):** 19

Packaging at cost

PART NUMBER	MODEL	BAR	L/MIN -1450 RPM	RPM 50 HZ	HP -1450 RPM	KW - 1450 RPM	L/MIN -1740 RPM	RPM 60 HZ	HP - 1740 RPM	KW - 1740 RPM	Ø SHAFT	SHAFT LEIGHT	SHAFT	PLUNGER Ø	€
P3.030.013-1	GM50150R	150	50	1450	19,48	14,51	60	1740	23,38	17,42	24mm	45mm	Destro/ Right	28mm	866,00
P3.030.014-1	GM54150R	150	54	1450	21,04	15,67	64,80	1740	25,25	18,81	24mm	55mm	Destro/ Right	28mm	866,00
P3.030.034-1	GM63150R	150	63	1450	24,54	18,30	75,60	1740	29,45	21,96	24mm	55mm	Destro/ Right	28mm	866,00
P3.030.027-1	GM50150L	150	50	1450	19,48	14,51	60	1740	23,38	17,42	24mm	45mm	Sinistro/ Left	28mm	866,00
P3.030.028-1	GM54150L	150	54	1450	21,04	15,67	64,80	1740	25,25	18,81	24mm	55mm	Sinistro/ Left	28mm	866,00
P3.030.035-1	GM63150L	150	63	1450	24,54	18,30	75,60	1740	29,45	21,96	24mm	55mm	Sinistro/ Left	28mm	866,00

GM CW

- **MAX INPUT TEMPERATURE:** 65°C-149°F
- **MIN INPUT PRESSURE (BAR):** 0,2
- **OIL CAPACITY (LT):** 1,2
- **INLET:** G 3/4
- **OUTLET:** G 1/2
- **NET WEIGHT (KG):** 19



Packaging at cost

PART NUMBER	MODEL	BAR	L/MIN -1450 RPM	RPM 50 HZ	HP -1450 RPM	KW - 1450 RPM	L/MIN -1740 RPM	RPM 60 HZ	HP - 1740 RPM	KW - 1740 RPM	Ø SHAFT	SHAFT LEIGHT	SHAFT PLUNGER Ø	€	
P3.032.001-1	GM CW 18300R	300	18	1450	14,03	10,45	21,60	1740	16,83	12,54	24mm	45mm	Destro/ Right	20mm	927,00
P3.032.002-1	GM CW 22300R	300	22	1450	17,14	12,77	26,40	1740	20,57	15,33	24mm	45mm	Destro/ Right	20mm	927,00
P3.032.003-1	GM CW 25300R	300	25	1450	19,48	14,51	30	1740	23,38	17,42	24mm	45mm	Destro/ Right	20mm	927,00
P3.032.005-1	GM CW 27300R	300	27	1450	21,04	15,67	32,40	1740	25,25	18,81	24mm	55mm	Destro/ Right	20mm	927,00
P3.032.006-1	GM CW 30250R	250	30	1450	19,48	14,51	36	1740	23,38	17,42	24mm	45mm	Destro/ Right	22mm	927,00
P3.032.008-1	GM CW 33250R	250	33	1450	21,43	15,96	39,60	1740	25,71	19,16	24mm	55mm	Destro/ Right	22mm	927,00
P3.032.009-1	GM CW 35170R	170	35	1450	15,45	11,51	42	1740	18,55	13,82	24mm	45mm	Destro/ Right	25mm	927,00
P3.032.010-1	GM CW 40170R	170	40	1450	17,66	13,16	48	1740	21,19	15,79	24mm	45mm	Destro/ Right	25mm	927,00
P3.032.012-1	GM CW 43170R	170	43	1450	18,99	14,15	51,60	1740	22,78	16,97	24mm	55mm	Destro/ Right	25mm	927,00
P3.032.015-1	GM CW 18300L	300	18	1450	14,03	10,45	21,60	1740	16,83	12,54	24mm	45mm	Sinistro/ Left	20mm	927,00
P3.032.016-1	GM CW 22300L	300	22	1450	17,14	12,77	26,40	1740	20,57	15,33	24mm	45mm	Sinistro/ Left	20mm	927,00
P3.032.017-1	GM CW 25300L	300	25	1450	19,48	14,51	30	1740	23,38	17,42	24mm	45mm	Sinistro/ Left	20mm	927,00
P3.032.019-1	GM CW 27300L	300	27	1450	21,04	15,67	32,40	1740	25,25	18,81	24mm	55mm	Sinistro/ Left	20mm	927,00
P3.032.020-1	GM CW 30250L	250	30	1450	19,48	14,51	36	1740	23,38	17,42	24mm	45mm	Sinistro/ Left	22mm	927,00
P3.032.022-1	GM CW 33250L	250	33	1450	21,43	15,96	39,60	1740	25,71	19,16	24mm	55mm	Sinistro/ Left	22mm	927,00
P3.032.023-1	GM CW 35170L	170	35	1450	15,45	11,51	42	1740	18,55	13,82	24mm	45mm	Sinistro/ Left	25mm	927,00
P3.032.024-1	GM CW 40170L	170	40	1450	17,66	13,16	48	1740	21,19	15,79	24mm	45mm	Sinistro/ Left	25mm	927,00
P3.032.026-1	GM CW 43170L	170	43	1450	18,99	14,15	51,60	1740	22,78	16,97	24mm	55mm	Sinistro/ Left	25mm	927,00

GM CW



- **MAX INPUT TEMPERATURE:** 65°C-149°F
- **MIN INPUT PRESSURE (BAR):** 1
- **OIL CAPACITY (LT):** 1,2
- **INLET:** G 3/4
- **OUTLET:** G 1/2
- **NET WEIGHT (KG):** 19

Packaging at cost

PART NUMBER	MODEL	BAR	L/MIN -1450 RPM	RPM 50 HZ	HP -1450 RPM	KW - 1450 RPM	L/MIN -1740 RPM	RPM 60 HZ	HP - 1740 RPM	KW - 1740 RPM	Ø SHAFT	SHAFT LEIGHT	SHAFT	PLUNGER Ø	€
P3.032.013-1	GM CW 50150R	150	50	1450	19,48	14,51	60	1740	23,38	17,42	24mm	45mm	Destro/ Right	28mm	927,00
P3.032.014-1	GM CW 54150R	150	54	1450	21,04	15,67	64,80	1740	25,25	18,81	24mm	55mm	Destro/ Right	28mm	927,00
P3.032.034-1	GM CW 63150R	150	63	1450	24,54	18,30	75,60	1740	29,45	21,96	24mm	55mm	Destro/ Right	28mm	927,00
P3.032.027-1	GM CW 50150L	150	50	1450	19,48	14,51	60	1740	23,38	17,42	24mm	45mm	Sinistro/ Left	28mm	927,00
P3.032.028-1	GM CW 54150L	150	54	1450	21,04	15,67	64,80	1740	25,25	18,81	24mm	55mm	Sinistro/ Left	28mm	927,00
P3.032.035-1	GM CW 63150L	150	63	1450	24,54	18,30	75,60	1740	29,45	21,96	24mm	55mm	Sinistro/ Left	28mm	927,00

TGM



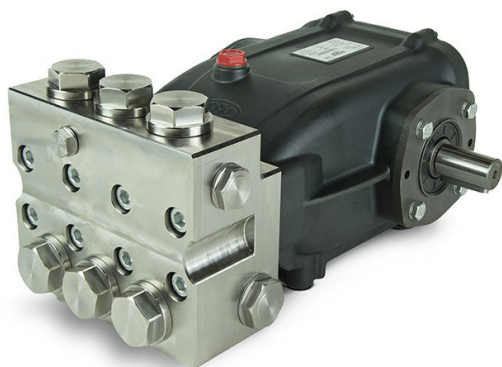
- **MAX INPUT TEMPERATURE:** 85°C-185°F
- **MIN INPUT PRESSURE (BAR):** 3
- **OIL CAPACITY (LT):** 1,2
- **INLET:** G 3/4
- **OUTLET:** G 1/2
- **NET WEIGHT (KG):** 19

Packaging at cost

PART NUMBER	MODEL	BAR	L/MIN -1450 RPM	RPM 50 HZ	HP -1450 RPM	KW - 1450 RPM	L/MIN -1740 RPM	RPM 60 HZ	HP - 1740 RPM	KW - 1740 RPM	Ø SHAFT	SHAFT LEIGHT	SHAFT	PLUNGER Ø	€
P3.034.001-1	TGM 18200R	200	18	1450	9,35	6,98	21,60	1740	11,2	8,37	24mm	45mm	Destro/ Right	20mm	989,00
P3.034.002-1	TGM 22200R	200	22	1450	11,43	8,53	26,40	1740	13,71	10,23	24mm	45mm	Destro/ Right	20mm	989,00
P3.034.003-1	TGM 25200R	200	25	1450	12,99	9,69	30	1740	15,58	11,63	24mm	45mm	Destro/ Right	20mm	989,00
P3.034.005-1	TGM 27200R	200	27	1450	14,03	10,38	32,40	1740	16,83	12,56	24mm	55mm	Destro/ Right	20mm	989,00
P3.034.006-1	TGM 30200R	200	30	1450	15,58	11,63	36	1740	18,70	13,96	24mm	45mm	Destro/ Right	22mm	989,00

PART NUMBER	MODEL	BAR	L/MIN -1450 RPM	RPM 50 HZ	HP -1450 RPM	KW - 1450 RPM	L/MIN -1740 RPM	RPM 60 HZ	HP - 1740 RPM	KW - 1740 RPM	Ø SHAFT	SHAFT LEIGHT	SHAFT	PLUNGER Ø	€
P3.034.008-1	TGM 33200R	200	33	1450	17,14	12,79	39,60	1740	20,57	15,35	24mm	55mm	Destro/ Right	22mm	989,00
P3.034.009-1	TGM 35170R	170	35	1450	15,45	11,44	42	1740	18,55	13,84	24mm	45mm	Destro/ Right	25mm	989,00
P3.034.010-1	TGM 40170R	170	40	1450	17,66	13,18	48	1740	21,19	15,82	24mm	45mm	Destro/ Right	25mm	989,00
P3.034.012-1	TGM 43170R	170	43	1450	18,99	14,17	51,60	1740	22,78	17,00	24mm	55mm	Destro/ Right	25mm	989,00
P3.034.013-1	TGM 50150R	150	50	1450	19,48	14,53	60	1740	23,38	17,45	24mm	45mm	Destro/ Right	28mm	989,00
P3.034.014-1	TGM 54150R	150	54	1450	21,04	25,25	64,80	1740	15,70	18,84	24mm	55mm	Destro/ Right	28mm	989,00
P3.034.034-1	TGM 63150R	150	63	1450	24,55	18,32	75,60	1740	29,45	21,82	24mm	55mm	Destro/ Right	28mm	989,00
P3.034.015-1	TGM 18200L	200	18	1450	9,35	6,98	21,60	1740	11,22	8,37	24mm	45mm	Sinistro/ Left	20mm	989,00
P3.034.016-1	TGM 22200L	200	22	1450	11,43	8,53	26,40	1740	13,71	10,23	24mm	45mm	Sinistro/ Left	20mm	989,00
P3.034.017-1	TGM 25200L	200	25	1450	12,99	9,69	30	1740	15,58	11,63	24mm	45mm	Sinistro/ Left	20mm	989,00
P3.034.019-1	TGM 27200L	200	27	1450	14,03	10,38	32,40	1740	16,83	12,56	24mm	55mm	Sinistro/ Left	20mm	989,00
P3.034.020-1	TGM 30200L	200	30	1450	15,58	11,63	36	1740	18,70	13,96	24mm	45mm	Sinistro/ Left	22mm	989,00
P3.034.022-1	TGM 33200L	200	33	1450	17,14	12,79	39,60	1740	20,57	15,35	24mm	55mm	Sinistro/ Left	22mm	989,00
P3.034.023-1	TGM 35170L	170	35	1450	15,45	11,44	42	1740	18,55	13,84	24mm	45mm	Sinistro/ Left	25mm	989,00
P3.034.024-1	TGM 40170L	170	40	1450	17,66	13,18	48	1740	21,19	15,82	24mm	45mm	Sinistro/ Left	25mm	989,00
P3.034.026-1	TGM 43170L	170	43	1450	18,99	14,17	51,60	1740	22,78	17,00	24mm	55mm	Sinistro/ Left	25mm	989,00
P3.034.027-1	TGM 50150L	150	50	1450	19,48	14,54	60	1740	23,38	17,45	24mm	45mm	Sinistro/ Left	28mm	989,00
P3.034.028-1	TGM 54150L	150	54	1450	21,04	15,70	64,80	1740	25,25	18,84	24mm	55mm	Sinistro/ Left	28mm	989,00
P3.034.035-1	TGM 63150L	150	63	1450	24,55	18,32	75,60	1740	29,45	21,98	24mm	55mm	Sinistro/ Left	28mm	989,00

GMX



Packaging at cost

PUMPS CAN BE USED WITH CHEMICAL AND SALT WATER

- **MAX INPUT TEMPERATURE:** 85°C-185°F
- **MIN INPUT PRESSURE (BAR):** 3
- **OIL CAPACITY (LT):** 1,2
- **INLET:** G 3/4
- **OUTLET:** G 1/2
- **NET WEIGHT (KG):** 19

PART NUMBER	MODEL	BAR	L/MIN -1450 RPM	RPM 50 HZ	HP -1450 RPM	KW - 1450 RPM	L/MIN -1740 RPM	RPM 60 HZ	HP - 1740 RPM	KW - 1740 RPM	Ø SHAFT	SHAFT LEIGHT	SHAFT	PLUNGER Ø	€
P3.033.001-1	GMX 18200R	200	18	1450	9,35	6,98	21,60	1740	11,2	8,37	24mm	45mm	Destro/ Right	20mm	2.521,00
P3.033.002-1	GMX 22200R	200	22	1450	11,43	8,53	26,40	1740	13,71	10,23	24mm	45mm	Destro/ Right	20mm	2.521,00

PART NUMBER	MODEL	BAR	L/MIN -1450 RPM	RPM 50 HZ	HP -1450 RPM	KW - 1450 RPM	L/MIN -1740 RPM	RPM 60 HZ	HP - 1740 RPM	KW - 1740 RPM	Ø SHAFT	SHAFT LEIGHT	SHAFT	PLUNGER Ø	€
P3.033.003-1	GMX 25200R	200	25	1450	12,99	9,69	30	1740	15,58	11,63	24mm	45mm	Destro/ Right	20mm	2.521,00
P3.033.005-1	GMX 27200R	200	27	1450	14,03	10,47	32,40	1740	16,83	12,56	24mm	55mm	Destro/ Right	20mm	2.521,00
P3.033.006-1	GMX 30200R	200	30	1450	15,58	11,63	36	1740	18,70	13,96	24mm	45mm	Destro/ Right	22mm	2.521,00
P3.033.008-1	GMX 33200R	200	33	1450	17,14	12,79	39,60	1740	20,57	15,35	24mm	45mm	Destro/ Right	22mm	2.521,00
P3.033.009-1	GMX 35170R	170	35	1450	15,45	11,51	42	1740	18,55	13,82	24mm	45mm	Destro/ Right	25mm	2.521,00
P3.033.010-1	GMX 40170R	170	40	1450	17,66	13,16	48	1740	21,19	15,79	24mm	45mm	Destro/ Right	25mm	2.521,00
P3.033.012-1	GMX 43170R	170	43	1450	18,99	14,15	51,60	1740	22,78	16,97	24mm	55mm	Destro/ Right	25mm	2.521,00
P3.033.013-1	GMX 50150R	150	50	1450	19,48	14,51	60	1740	23,38	17,42	24mm	45mm	Destro/ Right	28mm	2.521,00
P3.033.014-1	GMX 54150R	150	54	1450	21,04	15,67	64,80	1740	25,25	18,81	24mm	55mm	Destro/ Right	28mm	2.521,00
P3.033.034-1	GMX 63150R	150	63	1450	24,54	18,30	75,60	1740	29,45	21,96	24mm	55mm	Destro/ Right	28mm	2.521,00
P3.033.015-1	GMX 18200L	200	18	1450	9,35	6,98	21,60	1740	11,22	8,37	24mm	45mm	Sinistro/ Left	20mm	2.521,00
P3.033.016-1	GMX 22200L	200	22	1450	11,43	8,53	26,40	1740	13,71	10,23	24mm	45mm	Sinistro/ Left	20mm	2.521,00
P3.033.017-1	GMX 25200L	200	25	1450	12,99	9,69	30	1740	15,58	11,63	24mm	45mm	Sinistro/ Left	20mm	2.521,00
P3.033.019-1	GMX 27200L	200	27	1450	14,03	10,47	32,40	1740	16,83	12,56	24mm	55mm	Sinistro/ Left	20mm	2.521,00
P3.033.020-1	GMX 30200L	200	30	1450	15,58	11,63	36	1740	18,70	13,96	24mm	45mm	Sinistro/ Left	22mm	2.521,00
P3.033.022-1	GMX 33200L	200	33	1450	17,14	12,79	39,60	1740	20,57	15,35	24mm	55mm	Sinistro/ Left	22mm	2.521,00
P3.033.023-1	GMX 35170L	170	35	1450	15,45	11,51	42	1740	18,55	13,82	24mm	45mm	Sinistro/ Left	25mm	2.521,00
P3.033.024-1	GMX 40170L	170	40	1450	17,66	13,16	48	1740	21,19	15,79	24mm	45mm	Sinistro/ Left	25mm	2.521,00
P3.033.026-1	GMX 43170L	170	43	1450	18,99	14,15	51,60	1740	22,78	16,97	24mm	55mm	Sinistro/ Left	25mm	2.521,00
P3.033.027-1	GMX 50150L	150	50	1450	19,48	14,51	60	1740	23,38	17,42	24mm	45mm	Sinistro/ Left	28mm	2.521,00
P3.033.028-1	GMX 54150L	150	54	1450	21,04	15,67	64,80	1740	25,25	18,81	24mm	55mm	Sinistro/ Left	28mm	2.521,00
P3.033.035-1	GMX 63150L	150	63	1450	24,54	18,30	75,60	1740	29,45	21,96	24mm	55mm	Sinistro/ Left	28mm	2.521,00

XM

- **MAX INPUT TEMPERATURE:** 65°C-149°F
- **MIN INPUT PRESSURE (BAR):** 0,2
- **OIL CAPACITY (LT):** 1,2
- **INLET:** G 1/2
- **OUTLET:** G 3/8
- **NET WEIGHT (KG):** 17



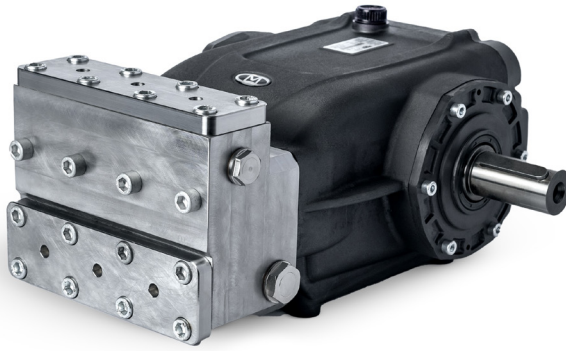
Packaging at cost

PART NUMBER	MODEL	BAR	L/MIN	RPM	HP	KW -	L/MIN	RPM	HP -	KW -	Ø	SHAFT LEIGHT	SHAFT	PLUNGER Ø	€
			-1450 RPM	50 HZ	-1450 RPM	1450 RPM	-1740 RPM	60 HZ	1740 RPM	1740 RPM					
P3.031.005-1	XM11500R	500	11	1450	14,29	10,58	13,2	1740	17,14	12,70	24mm	45mm	Destro/Right	16mm	1.174,00
P3.031.006-1	XM15500R	500	15	1450	19,48	14,43	18	1740	23,38	17,32	24mm	45mm	Destro/Right	16mm	1.174,00
P3.031.007-1	XM17500R	500	17	1450	22,08	16,35	20,40	1740	26,49	19,62	24mm	55mm	Destro/Right	16mm	1.174,00
P3.031.008-1	XM21500R	500	21	1450	27,27	20,20	25,20	1740	32,73	24,24	24mm	55mm	Destro/Right	16mm	1.174,00
P3.031.013-1	XM11500L	500	11	1450	14,29	10,58	13,2	1740	17,14	12,70	24mm	45mm	Sinistro/Left	16mm	1.174,00
P3.031.014-1	XM15500L	500	15	1450	19,48	14,43	18	1740	23,38	17,32	24mm	45mm	Sinistro/Left	16mm	1.174,00
P3.031.015-1	XM17500L	500	17	1450	22,08	16,35	20,4	1740	26,49	19,62	24mm	55mm	Sinistro/Left	16mm	1.174,00
P3.031.016-1	XM21500L	500	21	1450	27,27	20,20	25,2	1740	32,73	24,24	24mm	55mm	Sinistro/Left	16mm	1.174,00

LMX SS MANIFOLD

PUMPS CAN BE USED WITH CHEMICAL AND SALT WATER

- **MAX INPUT TEMPERATURE:** 65°C-149°F
- **MIN INPUT PRESSURE (BAR):** 0,2
- **OIL CAPACITY (LT):** 3,1
- **INLET:** G 3/4
- **OUTLET:** G 1/2
- **NET WEIGHT (KG):** 50



Packaging at cost

PART NUMBER	MODEL	BAR	L/MIN - 1450 RPM	RPM 50 HZ	HP -1450 RPM	KW - 1450 RPM	L/MIN - 1000 RPM	RPM 60 HZ	HP - 1000 RPM	KW - 1000 RPM	Ø SHAFT	SHAFT LEIGHT	SHAFT	PLUNGER Ø	€
P3.040.003	LM29500R	500	29	1450	37,66	27,9	20	1000	25,97	19,24	40mm	80mm	Destro/ Right	20mm	5.315,00
P3.040.001	LM36500R	500	36	1450	46,75	34,63	25	1000	32,47	24,05	40mm	80mm	Destro/ Right	20mm	5.315,00
P3.040.002	LM41500R	500	41	1450	53,25	39,44	30	1000	38,96	28,86	40mm	80mm	Destro/ Right	20mm	5.315,00
P3.040.014	LM29500L	500	29	1450	37,66	27,9	20	1000	25,97	19,24	40mm	80mm	Sinistro/ Left	20mm	5.315,00
P3.040.012	LM36500L	500	36	1450	46,75	34,63	25	1000	32,47	24,05	40mm	80mm	Sinistro/ Left	20mm	5.315,00
P3.040.013	LM41500L	500	41	1450	53,25	39,44	30	1000	38,98	28,86	40mm	80mm	Sinistro/ Left	20mm	5.315,00

LM CAST IRON MANIFOLD

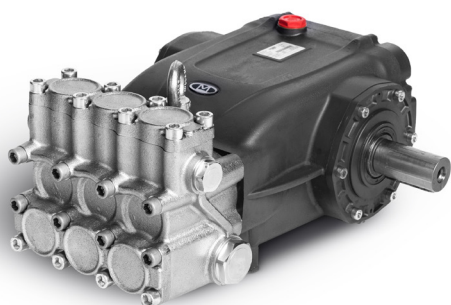


- **MAX INPUT TEMPERATURE:** 65°C-149°F
- **MIN INPUT PRESSURE (BAR):** 0,2
- **OIL CAPACITY (LT):** 3,1
- **INLET:** G 1
- **OUTLET:** G 3/4
- **NET WEIGHT (KG):** 50

Packaging at cost

PART NUMBER	MODEL	BAR	L/MIN - 1450 RPM	RPM	HP -1450 RPM	KW - 1450 RPM	Ø SHAFT	SHAFT LEIGHT	SHAFT	PLUNGER Ø	€
P3.040.006	LM40280R	280	46	1450	29,09	21,55	40mm	80mm	Destro/ Right	30mm	3.645,00
P3.040.007	LM67280R	280	67	1450	43,64	32,32	40mm	80mm	Destro/ Right	30mm	3.645,00
P3.040.008	LM80280R	280	80	1450	58,18	43,10	40mm	80mm	Destro/ Right	30mm	3.645,00
P3.040.023	LM90280R	280	90	1450	65,5	48,15	40mm	80mm	Destro/ Right	30mm	3.645,00
P3.040.017	LM40280L	280	46	1450	29,09	21,55	40mm	80mm	Sinistro/ Left	30mm	3.645,00
P3.040.018	LM67280L	280	67	1450	43,64	32,32	40mm	80mm	Sinistro/ Left	30mm	3.645,00
P3.040.019	LM80280L	280	80	1450	58,18	43,10	40mm	80mm	Sinistro/ Left	30mm	3.645,00

LM CAST IRON MANIFOLD



280 BAR

- **MAX INPUT TEMPERATURE:** 65°C-149°F
- **MIN INPUT PRESSURE (BAR):** 0,2
- **OIL CAPACITY (LT):** 3,1
- **INLET:** G 1
- **OUTLET:** G 3/4
- **NET WEIGHT (KG):** 50

Packaging at cost

PART NUMBER	MODEL	BAR	L/MIN - 1000 RPM	RPM 60 HZ	HP - 1000 RPM	KW - 1000 RPM	Ø SHAFT	SHAFT LEIGHT	SHAFT	PLUNGER Ø	€
P3.040.004	LM45280R	280	45	1000	32,73	24,24	40mm	80mm	Destro/ Right	30mm	3.645,00
P3.040.005	LM60280R	280	60	1000	43,64	32,32	40mm	80mm	Destro/ Right	30mm	3.645,00
P3.040.015	LM45280L	280	45	1000	32,73	24,24	40mm	80mm	Sinistro/ Left	30mm	3.645,00
P3.040.016	LM60280L	280	60	1000	43,64	32,32	40mm	80mm	Sinistro/ Left	30mm	3.645,00

LM CAST IRON MANIFOLD

150 BAR

- **MAX INPUT TEMPERATURE:** 65°C-149°F
- **MIN INPUT PRESSURE (BAR):** 0,2
- **OIL CAPACITY (LT):** 3,1
- **INLET:** G 1-1/4
- **OUTLET:** G 3/4
- **NET WEIGHT (KG):** 50



Packaging at cost

PART NUMBER	MODEL	BAR	L/MIN - 1000 RPM	RPM 60 HZ	HP - 1000 RPM	KW - 1000 RPM	Ø SHAFT	SHAFT LEIGHT	SHAFT	PLUNGER Ø	€
P3.040.009	LM80150R	150	80	1000	31,17	23,09	40mm	80mm	Destro/ Right	40mm	3.645,00
P3.040.010	LM100150R	150	100	1000	38,96	28,86	40mm	80mm	Destro/ Right	40mm	3.645,00
P3.040.011	LM120150R	150	120	1000	46,75	34,63	40mm	80mm	Destro/ Right	40mm	3.645,00
P3.040.020	LM80150L	150	80	1000	31,17	23,09	40mm	80mm	Sinistro/ Left	40mm	3.645,00
P3.040.021	LM100150L	150	100	1000	38,96	28,86	40mm	80mm	Sinistro/ Left	40mm	3.645,00
P3.040.022	LM120150L	150	120	1000	46,75	34,63	40mm	80mm	Sinistro/ Left	40mm	3.645,00

KIT VALVES



PART NUMBER	PM	PM CW	TPM	PM HY	PM EDM	PMD	PMD CW	TPMD	MMD	MMD CW	TMM	MMD HY	MMD-EDM	MMX	GM-20	GM-22	GM-25	GM-28	GM CW-20	GM CW-22	GM CW-25	GM CW-28	GMX-20	GMX-22	GMX-25	GMX-28	TGM-20	TGM-22	TGM-25	TGM-28	XM	LM-20	LM-30	LM-40	€
P9.001.002	X	X	X	X	X	X	X	X																											29,00
P9.001.005									X	X	X	X	X																						29,00
P9.001.011														X																					65,00
P9.001.007															X	X			X	X							X	X						39,00	
P9.001.008																	X	X			X	X							X	X				40,00	
P9.001.009																							X	X										130,00	
P9.001.010																								X	X									130,00	
P9.001.004																															X			162,00	
P9.001.012																																X		49,00	
P9.001.013																																X		143,00	
P9.001.014																																	X	143,00	

KIT SEALS



PART NUMBER	PM	PM CW	TPM	PM HY	PM EDM	PMD	PMD CW	MMD	MMD CW	TMM	MMD HY	MMD-EDM	MMX	GM-20	GM-22	GM-25	GM-28	GM CW-20	GM CW-22	GM CW-25	GM CW-28	GMX-20	GMX-22	GMX-25	GMX-28	TGM-20	TGM-22	TGM-25	TGM-28	XM	LM-20	LM-30	LM-40	€
P9.003.003	X			X		X																												40,00
P9.003.050					X																													40,00
P9.003.015			X																															119,00
P9.003.055		X					X																											41,00
P9.003.025								X			X																							43,00
P9.003.053									X																									47,00
P9.003.049												X																						43,00
P9.003.017										X			X																					151,00

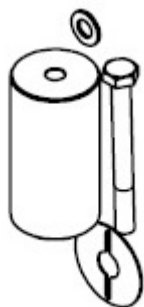
PART NUMBER	PM	PM CW	TPM	PM HY	PM EDM	PMD	PMD CW	MMD	MMD CW	TMM	MMD HY	MMD-EDM	MMX	GM-20	GM-22	GM-25	GM-28	GM CW-20	GM CW-22	GM CW-25	GM CW-28	GMX-20	GMX-22	GMX-25	GMX-28	TGM-20	TGM-22	TGM-25	TGM-28	XM	LM-20	LM-30	LM-40	€
P9.003.005														X				X																46,00
P9.003.007															X				X															51,00
P9.003.009																X				X														75,00
P9.003.011																	X				X													70,00
P9.003.032																						X				X								183,00
P9.003.033																							X				X							183,00
P9.003.034																							X					X						183,00
P9.003.035																								X					X					183,00
P9.003.046																														X				53,00
P9.003.057																															X			58,00
P9.003.058																															X			112,00
P9.003.059																															X			112,00

KIT COMPLETE SEAL 1/3



PART NUMBER	PM	PM CW	TPM	PM HY	PM EDM	PMD	PMD CW	MMD	MMD CW	TMM	MMD HY	MMD-EDM	MMX	GM-20	GM-22	GM-25	GM-28	GM CW-20	GM CW-22	GM CW-25	GM CW-28	GMX-20	GMX-22	GMX-25	GMX-28	TGM-20	TGM-22	TGM-25	TGM-28	XM	LM-20	LM-30	LM-40	€
P9.003.004	X			X	X																													24,00
P9.003.051					X																													24,00
P9.003.016			X																															53,00
P9.003.054									X																									37,00
P9.003.026								X			X																							33,00
P9.003.048												X																						33,00
P9.003.045													X																					91,00
P9.003.027										X																								72,00
P9.003.056		X					X																											
P9.003.019														X				X																34,00
P9.003.020															X				X															35,00
P9.003.021																X				X														42,00
P9.003.022																	X				X													41,00
P9.003.040																						X												105,00
P9.003.041																							X											105,00
P9.003.042																								X										105,00
P9.003.043																									X									105,00
P9.003.029																										X								91,00
P9.003.024																											X							91,00
P9.003.030																													X					91,00
P9.003.031																														X				105,00
P9.003.047																															X			53,00
P9.003.062																																X		45,00
P9.003.061																																X		72,00
P9.003.060																																X		72,00

KIT PLUNGER 1/3



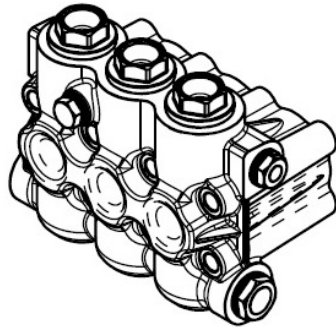
PART NUMBER	PM	PM CW	TPM	PM HY	PM EDM	PMD	PMD CW	MMD	MMD CW	TMM	MMD HY	MMD-EDM	MMX	GM-20	GM-22	GM-25	GM-28	GM CW-20	GM CW-22	GM CW-25	GM CW-28	GMX-20	GMX-22	GMX-25	GMX-28	TGM-20	TGM-22	TGM-25	TGM-28	XM	LM-20	LM-30	LM-40	€	
P9.004.021					X																														19,00
P9.004.002	X	X	X	X																															19,00
P9.004.023						X	X																												19,00
P9.004.020												X																							20,00
P9.004.015													X																						26,00
P9.004.013								X	X	X	X																								20,00
P9.004.009														X				X								X									26,00
P9.004.010															X				X								X								26,00
P9.004.011																X				X								X							26,00
P9.004.012																X					X									X					26,00
P9.004.016																						X													33,00
P9.004.017																							X												33,00
P9.004.018																								X											33,00
P9.004.019																									X										33,00
P9.004.014																														X				26,00	
P9.004.024																															X				54,00
P9.004.025																																X			85,00
P9.004.026																																	X		85,00

KIT OIL SEALS



PART NUMBER	PM	PM CW	TPM	PM HY	PM EDM	PMD	PMD CW	TPMD	MMD	MMD CW	TMM	MMD HY	MMD-EDM	MMX	GM-20	GM-22	GM-25	GM-28	GM CW-20	GM CW-22	GM CW-25	GM CW-28	GMX-20	GMX-22	GMX-25	GMX-28	TGM-20	TGM-22	TGM-25	TGM-28	XM	LM-20	LM-30	LM-40	€	
P9.039.001	X	X	X	X	X	X	X	X	X	X	X	X	X	X																						11,00
P9.039.002															X	X	X	X	X	X	X	X	X	X	X	X	X	X	X	X	X	X				11,00
P9.039.003																																X	X	X		18,00

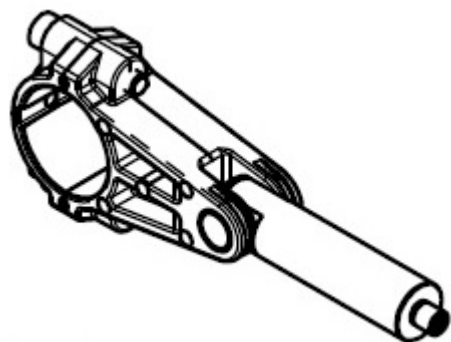
KIT COMPLETE MANIFOLD



PART NUMBER	PM	PM CW	TPM	PM HY	PM EDM	PMD	PMD CW	TPMD	MMD	MMD CW	TMM	MMD HY	MMD-EDM	MMX	GM-20	GM-22	GM-25	GM-28	GM CW-20	GM CW-22	GM CW-25	GM CW-28	GMX-20	GMX-22	GMX-25	GMX-28	TGM-20	TGM-22	TGM-25	TGM-28	XM	LM-20	LM-30	LM-40	€
P9.040.013		X					X																												248,00
P9.040.002	X			X		X																													205,00
P9.040.034					X																														204,00
P9.040.015			X					X																											306,00
P9.040.017									X			X																							228,00
P9.040.018										X																									281,00
P9.040.033													X																						227,00
P9.040.032														X																					1.434,00
P9.040.019											X																								360,00
P9.040.009															X																				476,00
P9.040.010																X																			476,00
P9.040.011																	X																		488,00
P9.040.012																		X																	488,00
P9.040.024																			X																537,00
P9.040.025																				X															537,00
P9.040.026																					X														553,00
P9.040.027																						X													553,00
P9.040.028																							X												2.427,00
P9.040.029																								X											2.427,00
P9.040.030																									X										2.427,00
P9.040.031																										X									2.427,00
P9.040.020																											X								602,00
P9.040.021																												X							602,00
P9.040.022																													X						618,00
P9.040.023																														X					618,00
P9.040.007																																	X		616,00
P9.040.037																																	X		2.323,00
P9.040.038																																		X	974,00
P9.040.039																																		X	974,00

SPARE PARTS FOR PUMPS

KIT CONNECTING ROD 1/3



PART NUMBER	PM	PM CW	TPM	PM HY	PM EDM	PMD	PMD CW	TPMD	MMD	MMD CW	TMM	MMD HY	MMD-EDM	MMX	GM-20	GM-22	GM-25	GM-28	GM CW-20	GM CW-22	GM CW-25	GM CW-28	GMX-20	GMX-22	GMX-25	GMX-28	TGM-20	TGM-22	TGM-25	TGM-28	XM	LM-20	LM-30	LM-40	€
P9.041.002	X	X	X	X																															28,00
P9.041.008					X	X	X	X																											27,00
P9.041.004									X	X	X	X	X	X																					40,00
P9.041.005															X	X	X	X	X	X	X	X	X	X	X	X	X	X	X	X	X				42,00
P9.041.009																															X	X	X	192,00	

TOOLS FOR PUMPS'S REPAIR



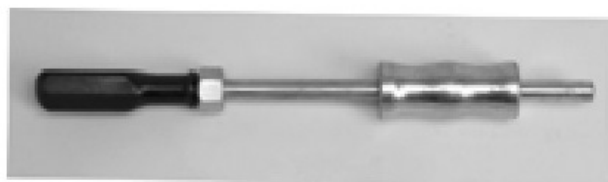
PART NUMBER	MODEL	€
P3.200.001	BUFFER PISTON SEALS D.18 PM PUMP	68,00

TOOLS FOR PUMPS'S REPAIR



PART NUMBER	MODEL	€
P3.200.002	BUFFER PISTONS SEALS D.20 MM PUMP	68,00
P3.200.003	BUFFER PISTONS SEALS D.20-22 POMPA GM	68,00
P3.200.004	BUFFER PISTONS SEALS D. 25-28 GM PUMP	68,00
P3.200.005	BUFFER PISTON SEALS FOR XM	68,00

SPARE PARTS FOR MAZZONI PUMPS



PART NUMBER	MODEL	€
1.061.02.001	EXTRACTOR TOOL FOR PRESSURE	144,00

SPARE PARTS FOR MAZZONI PUMPS



PART NUMBER	MODEL	€
1.038.02.001	EXTRACTION PUMP PRESSURE CLAMP 14-20	122,00
1.038.02.002	EXTRACTION PUMP PRESSURE CLAMP 20-30	156,00

TOOLS FOR PUMPS'S REPAIR



PART NUMBER	MODEL	€
P3.201.001	EXTRACTOR PUMP PM/MM	156,00
P3.201.002	EXTRACTOR PUMP GM/XM	156,00

TOOLS FOR PUMPS'S REPAIR



PART NUMBER	MODEL	€
P3.200.008	BUFFER FOR INSTALLING PISTONS SEALS PM/MMD PUMP	156,00
P3.200.009	BUFFER FOR INSTALLING PISTONS SEALS GM/XM PUMP	156,00

TOOLS FOR PUMPS'S REPAIR



PART NUMBER	MODEL	€
P3.201.003	ESTRATTORE VAM XM-1	65,00

OIL



PART NUMBER	MODEL	€
9.034.02.002	PUMP OIL SAE 15 W 40 1LT*	33,00
9.034.02.001	LUBRIFICANTE OLIO MOBIL DTE HY MED CONF.DA LITRO	33,00
9.034.02.003	OLIO RIDUTTORE PA *1LT*	338,00

SAFETY VALVES



PART NUMBER	MODEL	€
3.003.22.002	SECURITY VALVE 250BAR	63,00
3.003.22.005	SAFETY VALVE 200BAR	63,00

BY-PASS VALVES



PART NUMBER	MODEL	Q-TY	€
3.003.12.004	STANDARD BY PASS VALVE 250BAR 1/4"G	1-9	120,00
		10-100	105,00
3.003.12.029	BYPASS VRB 300BAR MA+AM G1/4	1-9	120,00
		10-99	105,00

SAFETY VALVES



PART NUMBER	MODEL	€
3.003.22.006	SECURITY VALVE 250BAR 3/8"G-FF	73,00
3.003.22.007	SAFETY VALVE 250 BAR 3/8" G-MM	78,00

BY-PASS VALVES



PART NUMBER	MODEL	Q-TY	€
3.003.14.004	BYPASS VALVE VB85/150	1-9	198,00
		10-100	185,00

SAFETY VALVES



PART NUMBER	MODEL	€
3.003.24.002	SECURITY VALVE SLV50	273,00

BY-PASS VALVES



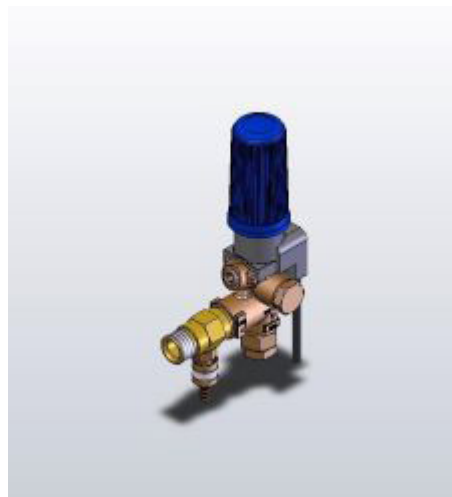
PART NUMBER	MODEL	Q-TY	€
3.003.12.017	VALVE VBR 250 BAR AM1/4" NO TST VITON	1-9	141,00
		10-100	113,00

BY-PASS VALVES



PART NUMBER	MODEL	Q-TY	€
3.003.14.017	VHP70 G1/2F 70MPA	1-7	839,00
		8-999	798,00

BY-PASS VALVES



PART NUMBER	MODEL	Q-TY	€
3.008.12.055	250 BAR BY-PASS VALVE WITH INJECTOR AND EXTERNAL PRESSURE SWITCH MA1 \ 4	1-7	175,00
		8-999	158,00

BY-PASS VALVES



PART NUMBER	MODEL	€
3.003.14.015	VALVE VRF2 WITH HANDLE 3/8G - M22x1.5	78,00
1.042.22.001	COLLECTOR KIT VRF2 X=19 Y=54-66 G3/8m G1/2+ML610	35,00

BY-PASS VALVES



PART NUMBER	MODEL	Q-TY	€
3.008.12.054	BY-PASS VALVE 250BAR WITH INJECTOR A.M.1 / 4 "IN.2.2 M22	1-7	150,00
		8-9999	137,00

REPAIR KIT FOR VALVES



PART NUMBER	MODEL	€
9.003.02.009	VBR REPAIR KIT	17,00

BY-PASS VALVES



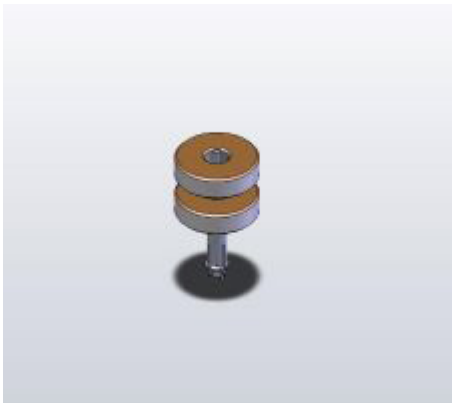
PART NUMBER	MODEL	Q-TY	€
3.008.12.001	VALVE VRB QUARK 250BAR AM1/4"G T.S	1-7	150,00
		8-9999	136,00

BY-PASS VALVES



PART NUMBER	MODEL	Q-TY	€
3.003.12.028	VALVE VRB 250BAR TST EXTERNAL **HT**	1-9	154,00
		10-100	127,00

EXTRACTOR



PART NUMBER	MODEL	€
3.065.02.001	PULLER D.7 (VBR)	152,00

BY-PASS VALVES



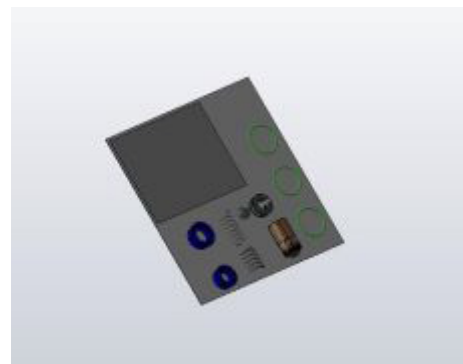
PART NUMBER	MODEL	€
9.003.02.006	KIT REPAIR BY- PASS VALVE	19,00

BY-PASS VALVES



PART NUMBER	MODEL	Q-TY	€
3.003.12.024	V250BAR BY-PASS VALVE WITH EXTERNAL PRESSURE SWITCH	1-9	154,00
		10-100	127,00
3.003.12.026	EXTERNAL VALVE VRB 300BAR TST	1-9	139,00
		10-9999	127,00

BY-PASS VALVES



PART NUMBER	MODEL	€
9.001.02.012	COMPLETE KIT FOR RECHANGE VBR	25,00

HOSE REELS



HOSE REELS



PART NUMBER	MODEL	€
3.048.04.007-1	HOSE REEL NEW L1 **MAZZONI**	130,00

PART NUMBER	MODEL	€
3.048.04.014-1	HOSE REEL L3 30 M, DISC ø300	140,00

HOSE REELS



HOSE REELS



PART NUMBER	MODEL	€
3.048.04.006-1	HOSE REEL NEW L2 20MT *MAZZONI*	136,00

PART NUMBER	MODEL	€
3.048.04.004-1	HOSE REEL NEW L4 40 M *MAZZONI*	143,00

HOSE REELS



PART NUMBER	MODEL	€
9.00.9021+9.00.9768	AUTOMATIC REWIND-DRIVEN HOSE REELS COMPLETE WITH PIVOTING WALL MOUNTING	603,00

HOSE REELS



PART NUMBER	MODEL	€
9.00.9521+9.00.9765	AUTOMATIC REWIND DRIVEN HOSE REEL IN STAINLESS STEEL WITH PIVOT BRACKET	1.159,00

HIGH PRESSURE HOSES



PART NUMBER	MODEL	€
2.006.12.003	HOSE H1000 140 BAR M22 M-F 6M. -20+80	34,00
2.006.24.041	HOSE 1/4 R1 8M 190BAR 3/8G MF + A.R	72,00
2.006.24.039	HOSE 5/16 R1 210B 10M 3/8"G-MF + ARF	100,00

HIGH PRESSURE HOSES



PART NUMBER	MODEL	€
2.006.24.069	H.P.HOSE 5/16"400BAR 3/8G-FM 10M+ARF-G M22	121,00
2.006.24.071	H.P.HOSE 5/16" 400BAR 3/8G-FM 20M+ARF-G M22	239,00
2.006.24.038	HOSE 3/8 400BAR 3/8"G-MF 10MT. + ARF M22	120,00
2.006.24.045	HOSE 3/8" 400BAR 20MT. 3/8"G-MF + ARF	239,00

HIGH PRESSURE HOSES



PART NUMBER	MODEL	€
4.007.24.032	HOSE 3/8" 600BAR FD-FD 3/8" + MAN 10MT.	636,00

GUNS



PART NUMBER	MODEL	Q-TY	€
3.018.22.011	GUN MV925 280Bar 30Lit/min SW 3/8F	1-19	62,00
		20-59	56,00
		60-1000	48,00
3.018.22.009	GUN ML960 30 L/MIN 500 BAR	1-9	260,00
		10-100	240,00

GUNS



PART NUMBER	MODEL	Q-TY	€
3.004.32.001	PROFESSIONAL TRIGGER GUN M200 S/S 3/8"G-M 4F	1-9	122,00
		10-100	102,00

GUNS



PART NUMBER	MODEL	Q-TY	€
3.021.22.007	GUN MV925 30 L/MIN 280 BAR INOX	1-19	97,00
		20-59	90,00
		60-1000	79,00
3.021.22.008	GUN ML955 40 L/MIN 310 BAR	1-19	104,00
		20-59	96,00
		60-1000	86,00

GUNS



PART NUMBER	MODEL	Q-TY	€
3.004.32.005	PROFESSIONAL TRIGGER GUN M200 S/S 3/8"G-M T.R.	1-9	136,00
		10-100	116,00

GUNS



PART NUMBER	MODEL	Q-TY	€
3.018.02.001	GUN K1000 WITH HOSE M22	1-9	42,00
		10-100	35,00

REPAIR KIT FOR GUN



PART NUMBER	MODEL	€
9.010.02.001	KIT REPAIR GUN M200	15,00

LANCES



PART NUMBER	MODEL	€
3.022.12.036	ATHERMIC LANCE L=700 SS WITH DOUBLE HEAD	67,00

LANCES



PART NUMBER	MODEL	€
3.022.12.034	ATHERMIC LANCE SC10 M22x1.5 L=700 INOX	50,00
3.022.12.010	LANCE JET-1 L1500 1/4NPT	80,00
3.022.12.011	LANCE JET-1 L1700 1/4NPT	89,00
3.022.12.012	LANCE JET-1 L2000 1/4NPT	99,00

LANCES



PART NUMBER	MODEL	€
3.022.12.038	LANCE L.1200 INOX 500 bar	201,00

LANCES



PART NUMBER	MODEL	€
3.020.22.040	EXTENSION ARCO L300 + T.R.M22X1,5 1/4"NPT	53,00
3.020.22.021	EXTENSION REGULABLE HEAD 1/4NPT M22X1.5 L.500 S.S.	53,00
3.020.22.043	EXTENSION ARCO L700 + T.R. M22X1 1/4"NPT	59,00

LANCES



PART NUMBER	MODEL	€
3.020.02.007	LANCE M100 WITHOUT NOZZLE	13,00
3.020.02.018	LANCE M100 AR-B HEAD 4F UG1,3 GRI.	46,00
3.020.22.001	EXTENSION FAST-4 M300+ 4F WITHOUT NOZZLE	46,00
3.020.22.067	EXTENSION L.300 + 4F + HEAD + BAYONET	42,00
3.020.22.034	LANCE S.STEEL L.500 M22X1.5 + 4FUNCTIONS HEAD	46,00

REGULATION HEAD



PART NUMBER	MODEL	€
3.005.02.002	HEAD 4 FUNSTIONS - WITHOUT NOZZLE	33,00
3.005.02.012	ADJUSTABLE HEAD 1\4"NPT	41,00

FOAM NOZZLE



PART NUMBER	MODEL	€
3.005.02.050	FOAM NOZZLE KOMPLET	128,00

PROTECTION



PART NUMBER	MODEL	€
1.046.02.005	NOZZLE PROTECTION	2,00
1.046.02.015	PROTECTION ADJUSTABLE HEAD MM	4,00

LANCES



PART NUMBER	MODEL	€
3.022.12.019	LANCE DOUBLE PA M22X1.5 500mm	81,00
3.022.04.001	LANCE DOUBLE MV30+PROT+GRIP 1000mm	78,00
3.022.04.002	DOUBLE LANCE L=800 MV30	74,00

VALVES



PART NUMBER	MODEL	€
3.003.32.004	FLOW REGULATION VALVE	50,00

LANCES



ROTOJET



PART NUMBER	MODEL	€
3.020.02.008	LANCE WITH ROTARY NOZZLE HOBBY H1000/K1020	97,00
3.020.22.036	LANCE S.STEEL L430 M22 ROTOJET 200 030	151,00
3.020.22.030	LANCE WITH ROTARY NOZZLE S.STEEL 200 040	177,00
3.020.22.033	LANCE WITH ROTARY NOZZLE S.STEEL 200 045	177,00
3.020.22.032	LANCE INOX L430 M22 ROTOJET 250 050	177,00
3.020.22.061	LANCE S.STEEL L430 M22 ROTOJET *055*	177,00
3.020.22.037	LANCE S.STEEL L430 M22 ROTOJET 200 060	177,00
3.020.22.055	LANCE S.STEEL L430 M22 ROTOJET *065*	177,00
3.020.22.062	LANCE S.STEEL L430 M22 ROTOJET 200 070	177,00
3.020.22.056	LANCE S.STEEL L430 ROTOJET 350 075	373,00
3.020.22.053	LANCE S.STEEL L430 M22 ROTOJET 250 080 - 25 L -	177,00
3.020.22.060	LANCE S.STEEL L430 M22 ROTOJET 400 10 W6000	485,00

PART NUMBER	MODEL	€
3.005.02.021	ROTATIVE NOZZLE 170 BAR OT - 035	68,00
3.005.02.033	ROTATIVE NOZZLE 250 BAR - 030	118,00
3.005.02.023	ROTATIVE NOZZLE 250 BAR - 040	130,00
3.005.02.026	ROTATIVE NOZZLE 250 BAR - 045	130,00
3.005.02.025	ROTATIVE NOZZLE 250 BAR - 050	130,00
3.005.02.042	ROTATIVE NOZZLE 250 BAR - 055 -	130,00
3.005.02.032	ROTATIVE NOZZLE 250 BAR - 060	130,00
3.005.02.037	ROTATIVE NOZZLE 250 BAR - 065	130,00
3.005.02.043	HEAD ROTOJET 250 BAR 070	130,00
3.005.02.036	ROTATIVE NOZZLE 250 BAR - 080	130,00
3.005.02.055	ROTOJET 400 BAR	130,00
3.005.02.053	ROTARY HEAD 500BAR UG.030	891,00

ROTOJET



PART NUMBER	MODEL	€
3.005.02.047	ROTOJET 500 BAR - NOZZLE 040 1/4	891,00

SAND BLASTING KIT



PART NUMBER	MODEL	€
3.020.22.038	SAND-BLASTING PROF.KIT D.1.4	143,00
3.020.22.024	SANBLASTING KIT PROF. D.1,5	143,00
3.020.22.023	SAND-BLASTING KIT D 1.6	143,00
3.020.22.022	SAND-BLASTING KIT D 1.7	143,00
3.020.22.066	SAND-BLASTING 500 BAR 80L	762,00

SAND FOR SANDBLASTING



PART NUMBER	MODEL	€
SABBIA 0,06	SAND QUARTZ SPHERICAL GREY 0,06/0,25	33,00
SABBIA 0,1	SAND QUARTZ SPHERICAL GREY 0,01/0,5	33,00
SABBIA 0,3	SAND QUARTZ SPHERICAL GREY 0,3/0,9	33,00

NOZZLES



PART NUMBER	MODEL	€
1.031.12.008	NOZZLE D.1.30 GREY	3,00
1.031.12.010	NOZZLE D.1,4 LIGHT GREEN	3,00

NOZZLES



PART NUMBER	MODEL	€
4.027.02.028	NOZZLE SA1/4MEG 1504 S.STEEL	18,00
4.027.02.029	NOZZLE SA1/4MEG 2504 S.STEEL	18,00
4.027.02.034	NOZZLE SA 1/MEG 15045 S/S	18,00
4.027.02.035	NOZZLE SA1/4MEG 25045 S.STEEL	18,00
4.027.02.007	NOZZLE 1505 MEG 1/4	18,00
4.027.02.001	NOZZLE SA1/4MEG 2505 S.S	18,00
4.027.02.040	NOZZLE SA1/4MEG 15055 S.STEEL	18,00
4.027.02.005	NOZZLE SA1/4MEG 25055 S.STEEL	18,00
4.027.02.044	NOZZLE SA1/4 MEG 1506 S.STEEL	18,00
4.027.02.050	NOZZLE SA1/4MEG 15065 S.STEEL	18,00
4.027.02.051	NOZZLE SA1/4MEG 25065 S.STEEL	18,00
4.027.02.056	NOZZLE SA1/4MEG 1507 S.STEEL	18,00
4.027.02.057	NOZZLE SA1/4MEG 2507 S.STEEL	18,00
4.027.02.070	NOZZLE SA1/4MEG 15075 S.STEEL	18,00
4.027.02.071	NOZZLE SA1/4MEG 25075 S.STEEL	18,00
4.027.02.073	NOZZLE SA1\4MEG-1508 S.STEEL	18,00
4.027.02.074	NOZZLE SA1/4MEG 2508 S.STEEL	18,00
4.027.02.080	NOZZLE SA1/4MEG 1510 S.STEEL	18,00
4.027.02.108	NOZZLE G1/4M-1504 SS 500 BAR	40,00

CONNECTIONS



PART NUMBER	MODEL	€
3.012.12.001	HOSETILE 1/2"	9,00
3.012.12.010	PLASTIC QUICK CONNECTION 3/4"	15,00

FILTERS



PART NUMBER	MODEL	€
3.032.02.001	FILTER "Y" 1/2G F\F 45 MESH	18,00

FILTERS



PART NUMBER	MODEL	€
9.028.02.001	INTAKE REDUCTION 3/4"G FOR "W" MODELS	12,00



PART NUMBER	MODEL	€
3.032.02.004	WATER FILTER MINI G1/2F 50SH 40l/min	45,00

FILTERS

FILTERS

PART NUMBER	MODEL	€
3.032.04.007	EXTERNAL FILTER WITH SALT NET	23,00
3.032.04.002	(SALT NOT INCLUDED) 3/4 "GAS	76,00

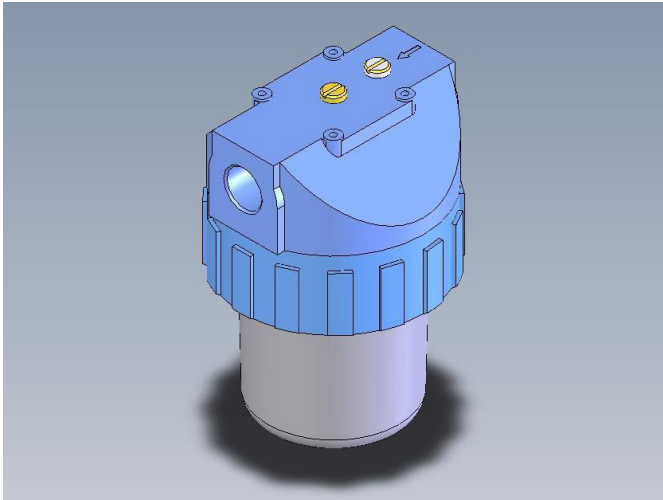
PART NUMBER	MODEL	€
3.032.02.005	BRASS FILTER "Y" 3/4"G-FF	19,00

FILTERS



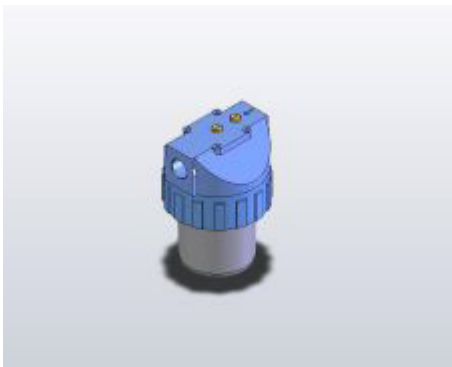
PART NUMBER	MODEL	€
1.115.04.001	NATURAL FINE SALT OF WHITE POLYPHOSPHATE	25,00

FILTERS



PART NUMBER	MODEL	€
3.032.02.006	FILTER 9"3/4" - 1"	100,00

FILTERS



PART NUMBER	MODEL	€
3.032.02.007	WATERFILTER HOUSING WITH FILTER *PG3/4"-1/2"* 60MICR-!SALT NOT INCLUDED!	55,00

CONNECTIONS



PART NUMBER	MODEL	€
3.012.02.011	CONNECTION 3PZ KEY M22X1,5 1/4"G-F	20,00
3.012.02.004	QUICK CONNECTION ARF 3p 3/8G-M x M22`C`	20,00

CONNECTIONS



PART NUMBER	MODEL	€
3.012.02.007	CONNECTION 3PZ KEY M22X1,5 3/8"G-F	20,00

CONNECTIONS



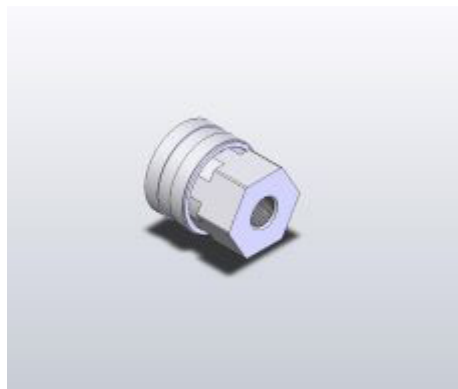
PART NUMBER	MODEL	€
3.012.02.014	FIXED CONNECTION 3PZ KEY M22X1,5 1/2"G-M	20,00
3.012.02.008	FIXED CONNECTION 2PZ L KEY M22X1,5 1/8"G-F	20,00
3.012.02.005	CONNECTION A.R.F 2p 1/4G FxM22 `L`	20,00
3.012.02.006	QUICK CONNECTION L 2PC 1/4G-M	20,00

CONNECTIONS



PART NUMBER	MODEL	€
1.005.12.003	QUICK CONNECTION MALE 1/4-F	29,00

CONNECTIONS



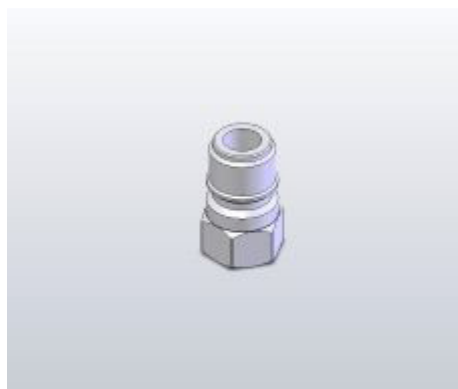
PART NUMBER	MODEL	€
3.012.12.021	QUICK CONNECTION 1/4F	72,00

INJECTORS



PART NUMBER	MODEL	€
3.016.14.005	INJECTOR REG2.2 M22x1.5 M-ARF 3p M22'C'	57,00

CONNECTIONS



PART NUMBER	MODEL	€
1.005.12.004	QUICK SHORT STEEL MALE 3/8 "F	29,00

CONNECTIONS



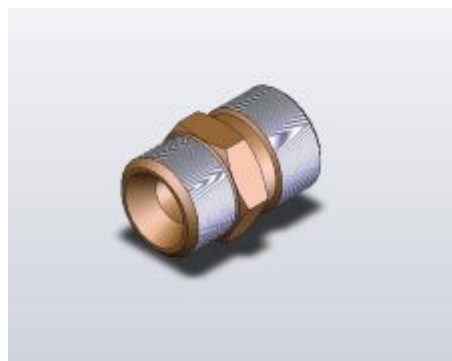
PART NUMBER	MODEL	€
1.001.02.018	CONNECTION 1/4"G-M - M22X1,5	11,00
1.001.02.011	CONNECTION ARF G1/4-FxM22-M 'L'	10,00
1.001.02.004	CONNECTION ARF M22x1.5-3\8G-M	11,00
1.001.02.015	CONNECTION "C" KEY 3/8"G-F M22X1,5	6,00

CONNECTIONS



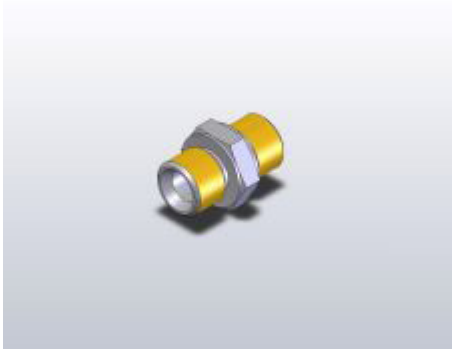
PART NUMBER	MODEL	€
3.012.12.022	QUICK CONNECTION S/STEEL 3/8 F	72,00

CONNECTIONS



PART NUMBER	MODEL	€
1.001.02.016	CONNECTION "C" KEY 1/2"G-M M22X1,5	12,00
1.001.02.017	CONNECTION "C" KEY 1/2"G-F M22X1,5	14,00

NIPPLES



PART NUMBER	MODEL	€
1.096.04.001	CONNECTION 3/8"G M-M ESAG.22	3,00
1.096.04.002	CONNECTION 3/8"G-M CIL. 3/8"G-M	12,00
1.096.04.003	CONNECTION G1/2 M-M EXAG.25	8,00
1.096.04.004	CONNECTION 3/4G M/M EX 32	12,00
1.001.34.003	CONNECTION 3/4"G	28,00
1.001.34.005	CONNECTION 1/4"-3/8" G M-M	23,00
9.009.02.002	CONNECTION FOR DOUBLE USE	130,00
1.001.14.001	CONNECTION KEY "L" 3/8GMM	26,00

PRESSURE GAUGES



PART NUMBER	MODEL	€
4.020.04.001	PRESSURE GAUGE 0-400BARG1/4B MG+10%	20,00
4.020.04.005	GAUGE 0-600 BAR 1/4"	53,00
4.020.04.006	GAUGE S.STEEL D.40 0-300 1/4G	20,00
4.020.14.002	GAUGE D.50 0-400 INOX 1/4"G	24,00

CONNECTIONS



PART NUMBER	MODEL	€
3.012.12.006	FAST CONNECTION KEY 3/8"G-F	14,00
3.012.12.003	FAST CONNECTION KEY KEY 3/8"G-M	19,00
3.012.12.004	FAST CONNECTION KEY 1/2"G-M	19,00
2.021.02.001	PREMOUNTED CONNECTION	10,00
1.001.02.030	CONNECTION 3/4"G-3/8"G-MM	17,00

DETERGENTS

PART NUMBER	MODEL	€
4.086.04.002	MOLECULAR DISGREGATOR DETERGENT FOR H.P. 5 TANK	163,00

CALDAIE DIESEL CON QUADRO / Diesel Boilers with electrical box	IMBALLO	CM.	KG.	PZ PER PALLET	IMBALLO	CM.	KG.	PZ PER PALLET
	PACKING			PCS EACH PALLET	PACKING			PCS EACH PALLET
Caldaia Piccola Small size boiler	BANCALE / PALLET cod. IMBALLO-1	66x80x120	65	1	BANCALE / PALLET cod. IMBALLO-2	120X80X115	205	3
Caldaia media Medium Size Boiler	BANCALE / PALLET cod. IMBALLO-1	66x80x120	80	1	BANCALE / PALLET cod. IMBALLO-2	120X80X115	265	3
Caldaia grande Big Size Boilers	BANCALE / PALLET cod. IMBALLO-13	66x80x117	127	1	BANCALE / PALLET cod. IMBALLO-2	120X80X115	220	2
40 L boiler	BANCALE / PALLET cod. IMBALLO-1	66x80x132	130	1	BANCALE / PALLET cod. IMBALLO-2	120x80x132	264	2

CALDAIE GAS / Gas Boilers	IMBALLO	CM.	KG.	PZ PER PALLET	IMBALLO	CM.	KG.	PZ PER PALLET
	PACKING			PCS EACH PALLET	PACKING			PCS EACH PALLET
Caldaia Piccola Small size boiler	PALLET	66x80x120	65	1	PALLET	120X80X115	205	2
Caldaia media Medium Size Boiler	PALLET	66x80x120	80	1	PALLET	120X80X115	220	2
Caldaia grande Big Size Boilers	PALLET	66x80x117	127	1	PALLET	120X80X115	247	2

Caldaia /Boiler	IMBALLO	CM.	KG.	PZ PER PALLET	IMBALLO	CM.	KG.	PZ PER PALLET
	PACKING			PCS EACH PALLET	PACKING			PCS EACH PALLET
Caldaia Piccola Small size boiler	PALLET	66x80x120	65	1	PALLET	120X80X115	205	4
Caldaia media Medium Size Boiler	PALLET	66x80x120	80	1	PALLET	120X80X115	265	4
Caldaia grande Big Size Boilers	PALLET	66x80x117	96	1	PALLET	120X80X115	280	3
Caldaia grande Big Size Boilers	PALLET	66x80x117	96	1	PALLET	120X80X115	192	2
Caldaia Maxi Maxi Boiler	PALLET	66x80x118	121	1	PALLET	120x80x132	230	2

FIREBOX 15-25I	66x80x117	120	1
FIREBOX 30 L	90X72X125	155	1



MOTORI / MOTORS

MODELLO MODEL	IMBALLO	CM.	KG.	PZ PER	IMBALLO	CM.	KG.	PZ PER
	PACKING			PALLET	PACKING			PALLET
M100 / M112	PALLET	75x60x50	140	FROM 1 TO 4	PALLET	100x65x50	180	5
M100 / M112	PALLET	120x80x50	350	10				
M132	PALLET	75x60x50	130	2	PALLET	120x80x50	250	4
MEC160	PALLET	66X99X73	148					

MOTOPOMPE SENZA QUADRO ELETTRICO / MOTORPUMPS WITHOUT ELECTRC BOX

3.071.02.014-15-10-09	PALLET	75x60x50	90	2	PALLET	125X80X50	170	4
3.071.04.011-12-13		75x60x50	90	2	PALLET	125X80X50	130	3

MOTOPOMPE CON QUADRO ELETTRICO / MOTORPUMPS WITH ELECTRIC BOX

3.071.02.020 - 26	PALLET	59x75x75	57	1	PALLET	120X80X50	170	4	
							120x80x200	680	16

imballaggi pompe / Pumps packaging:

tipo /type	kg	Quantità/ Q.ty	dimensions cm	
1 carton box	8	1	26x30x18cm	PM
1 pallet	180	20	120x80x32	
1 pallet	1000	120	120x80x115	
1 carton box	10	1	26x30x18cm	PM EDM
1 pallet	130	12	120x80x32	
1 pallet	770	72	120x80x115	
1 carton box	9	1	26x30x18cm	PM - HY
1 pallet	150	16	120x80x32	
1 pallet	909	84	120x80x115	
1 carton box	11	1	26x30x18cm	MMD
1 pallet	196	16	120x80x32	
1 pallet	1096	96	120x80x115	
1 carton box	13	1	26x30x18cm	MMD EDM
1 pallet	165	12	120x80x32	
1 pallet	945	72	120x80x115	
1 carton box	12	1	26x30x18cm	MMD - HY
1 pallet	212	16	120x80x32	
1 pallet	1200	96	120x80x115	

Peso pompa senza imballo/ Pump's weight without package 19 Kg

tipo /type	kg	Quantità/Q.ty		dimensions cm	GM/XM
		pz/pc			
1 carton box	24	1		60x80x42	
1 pallet	96	4		75x60x77	
1 pallet	210	10		120x80x60	
1 pallet	400	20		120x80x100	
1 pallet	590	30		120x80x140	
1 pallet	780	40		120x80x180	
1 pallet	57	1		75x60x77	LM

AVVOLGITUBI / HOSE REELS

1 Scatola / Box	40x30x18	4,3 KG	25 scatole / Boxes	120x80x175	123 KG
20 scatole / Boxes	120x80x143	102 KG	30 scatole / Boxes	120x80x207	207 KG





NOTES

Machines also available at 50 hz 220 V (+121 euro net for this modification)
All Mazzoni standar professional machines 1450RPM are equipped with MAZZONI pumps
All professional electric machines 1450 RPM are equipped with elastic joint
Prices, ex works Mazzoni Italy, include standar accessoires (h.p.hose, lance, gun and nozzle) and packaging.
Machines also available in high temperature version model KC/KX/KSF/KS - add 702 euros to the list price -Total stop Timer 5 sec; - Transformer, timer, contactor. (from 7,5 kw to 11 kw) - Hight temperature seal's pumps and bypass

CONDITIONS OF SALES

- 1) **ORDERS.** While the order undersigned by the client is binding, Mazzoni its reserves the faculty to non accept it, giving written communication to the client within 3 days from the reception of the order. The orders taken through Mazzoni s.r.l. agents, representatives or salesmen are always subject to the unobjectionable discretion of the same Mazzoni s.r.l. Consequently, the above-mentioned orders shall be considered binding only after a written confirmation of the order is drawn up by Mazzoni s.r.l.
- 2) **PRICES.** Prices are intended for cash payment, without V.A.T. and possible expenses for taxes and duties always and entirely paid by the Buyer even if applied during the performance of the contract. The prices may be subject at any time to variations on the part of Mazzoni.
- 3) **DELIVERY.** The delivery term expressly indicated in the order and set at the closing of the contract is understood as terms of shipment of the goods from the factory. The date of shipment is understood as approximate ad is not binding with respect to the Vendor, in particular, for delays caused by acts of God. If the company Mazzoni s.r.l. is not in condition to respect it, it will give communication to the client. Any delays in the processing of orders do not give rise to the Purchaser's right to compensation, penalties or other rights.
- 4) **TRANSPORT.** Ex-works, packaging included. Transport and insurance costs are not included in the price list. Every cost and risk deriving from the transport of the goods from Mazzoni to the customer's warehouse is born by the latter. For goods shipped by carrier: claims for damaged or missing goods can only be investigated when recorded on carrier's note. Before signing carrier's note check for any damage; check number of packages received and record any damages or discrepancies on the carrier's note. After signing carrier's note: check all items against enclosed delivery note; Telephone: (+39 0522 575156) for copy of delivery note if necessary; notify us by e-mail : info@e-mazzoni.it of any damages or discrepancies. Damages and discrepancies can only be investigated if reported by e-mail info@e-mazzoni.it , writing within 2 working days. Please include a copy of our delivery note and your name.
- 5) **CLAIMS AND COMPLAINTS** - The buyer is responsible for checking the goods immediately after having received them. The goods will be considered fully accepted after 8 (eight) days from their arrival to destination. Any claims related to the quality of the goods, under penalty of lapse, must be sent in writing to e-mail info@e-mazzoni.it to Mazzoni s.r.l., within 8 (eight) days from the date of acceptance of the same goods. In case of claims related to running defects, and which can be verified only by operating the product, the conditions for presenting the written claim are within 30 (thirty) days from the date of acceptance of the goods (the document of shipment will bear witness). In case the claim is accepted as valid, Mazzoni s.r.l. will be responsible solely for replacing or repairing the parts, while any other form of indemnity and tranport costs are excluded. Claims for any delays or damages caused by the shipping must be addressed to the carrier, upon delivery of the goods, making a written



reserve on the same document of shipment which must then be notified immediately, in copy, to Mazzoni s.r.l.

6) RESHIPMENT OF GOODS. Mazzoni S.r.l. does not accept the return of goods without its previous preventive and written authorization. On the document of transport for the return it has always to be mentioned in exhaustive way the reason of the return. In case of wrong order, goods can be returned without shipment charges and at the Buyer's risk only if perfectly complete, packed and not used. In any case will be effected a 7% reduction on net price shown on invoice.

7) GUARANTEE. Mazzoni's products are guaranteed for the duration of 12 months given off date of shipment. The guarantee consists in the free substitution of parts that result defectives. Mazzoni s.r.l. is not responsible of consequential defects by improper installation, incorrect use, vandal damages, natural catastrophes or action of war, normal deterioration, inexperience or incompetence in the use and application. The guarantee does not cover tampering defects, reparations or changes made by non-authorized firms. The company has the faculty to value the nature of the problem and to charge the intervention of restoration costs to the client, if the defect has origin from one of the causes foreseen before. (see user manual). The transport for the components to be repaired or replaced are at charge of the buyer. For components not produced from Mazzoni warranty us limited to the one recognised from its suppliers.

8) INSTALLATION AND TEST - Installation of the equipment and spare parts marketed by Mazzoni s.r.l. and the related electric and water hook-ups will be charged to the Buyer. Any operations on the part of a Mazzoni s.r.l. qualified technician for the equipment's initial running test, has to be discussed at the moment of the order and will be billed separately.

9) RESPONSIBILITY. The responsibility of the product is the one foreseen by the international normative. Mazzoni is not responsible for damages to people or things originated from improper use or installation, bad maintenance, use of non fit fuels, use of electrical power, tampering or sabotage, or defects non attributable to the engineering or manufacturing to the product.

10) PROPERTY. Our company reserves the ownership of the products since the integral payment of the price. The goods will have to remain in the delivery place since the integral payment.

11) PAYMENT. The payment of the invoices has to be effected to Mazzoni s.r.l. If not specified the company is authorized to issue draft or bank receipt. The non-payment of that forces the client to make the whole payment to Mazzoni s.r.l.. In case of delay of payment Mazzoni s.r.l. will apply the interests increased of 4%.

12) RETENTION OF TITLE. The object of the sale goods remain the exclusive property of the seller until full payment of the agreed price as required by art. 1523 of the Civil Code.

13) SPECIFICATIONS. Technical specifications indicated in the present pricelist are not binding on the manufacturer. Mazzoni s.r.l. reserves the right do make changes to the products that are considered as appropriate, without notice and without giving rise to the right to compensation or claims on the part of the purchaser.

14) ARBITRATION CLAUSE. Every controversy started from the interpretation or from the execution of the contract will be devolved to the competence of the Court of Reggio Emilia.

ATTENZIONE

/

WARNING

La ditta MAZZONI S.r.l si riserva il diritto di apportare modifiche al presente listino generale ed alle caratteristiche tecniche delle macchine prodotte senza alcun preavviso. MAZZONI S.r.L. reserves the right to make modifications to this general price list and to the technical specifications of the appliances produced without any previous notice.



15) ONLINE PRICE
Regarding websites and web platforms (eg Ebay, Alibaba, Amazon etc.), the visible price online must be not less than the list price communicated by the company. Also with regard to online promotions, the discounted price must not be lower than the price list. The inclusion of prices online must be communicated to the manufacturer, for information, within 5 days of insertion.

16) SELLING PRICE
The actual selling price to the end user must not be less than price list minus 15% discount.

17) Art. 8 informatio for costumers

DIRECTIVE 2006/42/EC, at EHSR 1.7.4 (ANNEX I) does not specify the form to be given to the instruction manual; there for the instruction manual is provided in digital format, or is made available on the website <https://manuals.e-mazzoni.it>, unless expressly request by the customer. The instructions concerning safety and health will also be provided in paper format, in the product packaging (Quickuse instructions).